

Authentic

AUTOLOK™

SELF-LOCKING QUICK COUPLINGS

Autolok™ by OPW represents the most significant development in cam-and-groove coupling design. It utilizes a patented locking arm design that ensures the arms are locked automatically when closed. Opening is a simple matter of tugging the finger rings, eliminating the use of clips, pins or buttons.

If operator safety and liquid integrity are important to your business, Autolok™ provides the assurance of quality and has been recognized as the industry's safest and sturdiest cam-and-groove coupling.

BENEFITS

- No accidental release possible
- Not affected by process vibrations
- Prevents unintentional arm release beyond 45°
- Prevents hassle with wires
- Prevents fingers getting trapped
- Extra durability in harsh environments
- Assures 316 material (3.1)
- Extra security
- Smooth action
- Superior quality

FEATURES

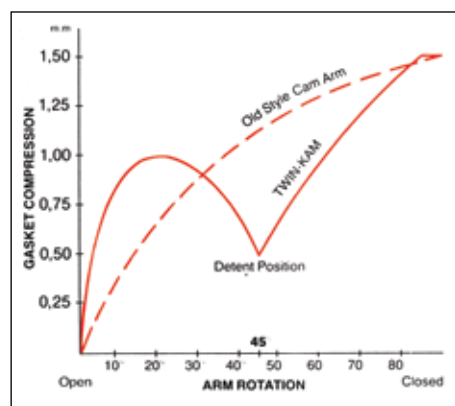
- Automatic locking mechanism
- Twin-Kam™ arms
- Sturdy finger rings
- Heavy-duty construction
- Material certificates

APPLICATIONS ▶

- Chemical products
- Petroleum products
- Agriculture
- Brewing
- Concrete
- Dry bulk
- Paint industry
- Filtration
- Ink industry
- Liquid fertilizer


IMPORTANT: OPW products should be used in compliance with applicable federal, state, provincial, and local laws and regulations. Product selection should be based on physical specifications and limitations and compatibility with the environment and materials to be handled. OPW MAKES NO WARRANTY OF FITNESS FOR A PARTICULAR USE. All illustrations and specifications in this literature are based on the latest product information available at the time of publication. OPW reserves the right to make changes at any time in prices, materials, specifications and models and to discontinue models without notice or obligation.


Only authentic Autolok™ quick couplers come with patented smooth-action arms to ensure hassle-free operation. Always specify authentic Autolok™ quick couplers to ensure safety, cleanliness and reliability.





• Finger rings are standard on sizes from 25 mm/1 inch • DIN SS Kamloks® have finger rings on all sizes


AL = Aluminum | BR = Bronze | SS = Stainless Steel | PP = Polypropylene


733BBL Coupler With Male Thread		mm	15	20	25	32	40	50	65	80	100	125	150	200	
		inch	0.50	0.75	1	1.25	1.50	2	2.50	3	4	5	6	8	
		AL	-	-	-	-	-	-	-	-	-	-	-	-	-
		BR	-	-	-	-	-	-	-	-	-	-	-	-	-
		SS	•	•	•	•	•	•	•	•	•	-	-	-	-
		PP	-	-	-	-	-	-	-	-	-	-	-	-	-

733CL Coupler With Hose Shank		mm	15	20	25	32	40	50	65	80	100	125	150	200	
		inch	0.50	0.75	1	1.25	1.50	2	2.50	3	4	5	6	8	
		AL	-	-	-	-	-	-	-	-	-	-	-	-	-
		BR	-	-	-	-	-	-	-	-	-	-	-	-	-
		SS	-	•	•	•	•	•	•	•	•	-	-	-	-
		PP	-	-	-	-	-	-	-	-	-	-	-	-	-

733CCL Coupler With hose shank to DIN 2828 for DIN 2817 Hose Clamps		mm	15	20	25	32	40	50	65	80	100	125	150	200	
		inch	0.50	0.75	1	1.25	1.50	2	2.50	3	4	5	6	8	
		AL	-	-	-	-	-	-	-	-	-	-	-	-	-
		BR	-	-	-	-	-	-	-	-	-	-	-	-	-
		SS	-	•	•	•	•	•	•	•	•	-	-	-	-
		PP	-	-	-	-	-	-	-	-	-	-	-	-	-

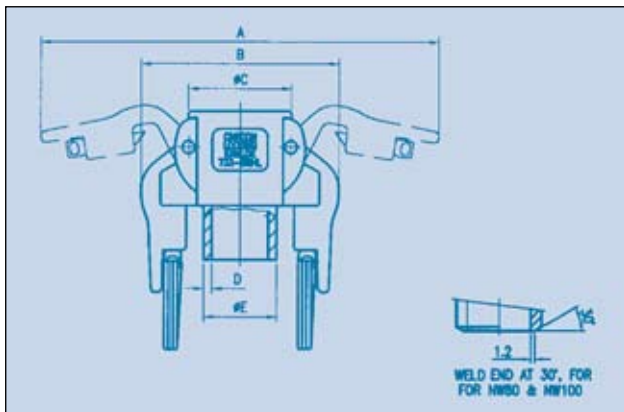
733DBSL Coupler With Female Thread		mm	15	20	25	32	40	50	65	80	100	125	150	200	
		inch	0.50	0.75	1	1.25	1.50	2	2.50	3	4	5	6	8	
		AL	-	-	-	-	-	-	-	-	-	-	-	-	-
		BR	-	-	-	-	-	-	-	-	-	-	-	-	-
		SS	•	•	•	•	•	•	•	•	•	-	-	-	-
		PP	-	-	-	-	-	-	-	-	-	-	-	-	-

733DBSFL Coupler With Female Thread to DIN 2828 with Thread Gasket		mm	15	20	25	32	40	50	65	80	100	125	150	200	
		inch	0.50	0.75	1	1.25	1.50	2	2.50	3	4	5	6	8	
		AL	-	-	-	-	-	-	-	-	-	-	-	-	-
		BR	-	-	-	-	-	-	-	-	-	-	-	-	-
		SS	•	•	•	•	•	•	•	•	-	-	-	-	-
		PP	-	-	-	-	-	-	-	-	-	-	-	-	-

733DCL Dustcap		mm	15	20	25	32	40	50	65	80	100	125	150	200	
		inch	0.50	0.75	1	1.25	1.50	2	2.50	3	4	5	6	8	
		AL	-	-	-	-	-	-	-	-	-	-	-	-	-
		BR	-	-	-	-	-	-	-	-	-	-	-	-	-
		SS	•	•	•	•	•	•	•	•	•	-	-	-	-
		PP	-	-	-	-	-	-	-	-	-	-	-	-	-

IMPORTANT: OPW products should be used in compliance with applicable federal, state, provincial, and local laws and regulations. Product selection should be based on physical specifications and limitations and compatibility with the environment and materials to be handled. OPW MAKES NO WARRANTY OF FITNESS FOR A PARTICULAR USE. All illustrations and specifications in this literature are based on the latest product information available at the time of publication. OPW reserves the right to make changes at any time in prices, materials, specifications and models and to discontinue models without notice or obligation.

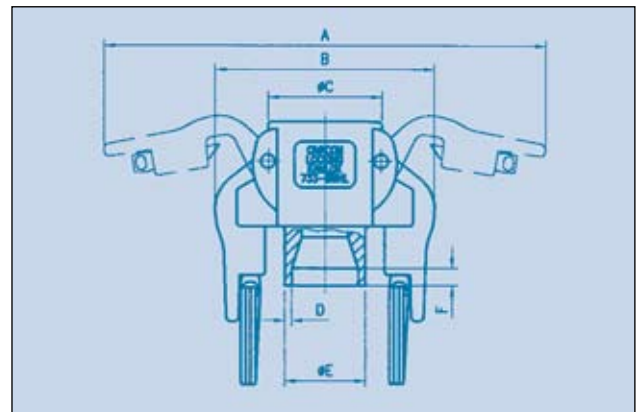
SS BUTT-WELD AUTOLOK™, 733BWDL-SS



mm	inch	A	B	C	D	E
15	0.50	48	12	42	2.3	21.3
20	0.75	48	12	42	2.6	26.9
25	1.00	62	21	46	2.6	33.7
32	1.25	71	22	58	2.6	42.4
40	1.50	72	22	66	2.6	48.3
50	2.00	78	26	79	2.9	60.3
65	2.50	79	22	89	2.9	76.1
80	3.00	90	33	110	3.2	88.9
100	4.00	98	39	141	3.6	114.3

Stainless Steel Only ◀ Dimensions in mm ▶

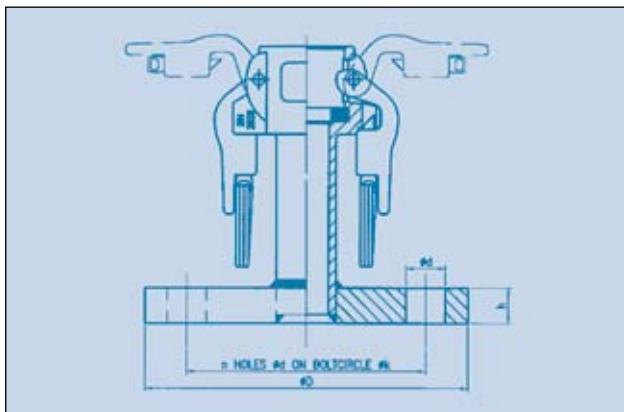
SS BUTT-WELD AUTOLOK™, 733BWHL-SS



mm	inch	A	B	Ø C	D	Ø E	F
15	0.50	48	12	42	1.6	21.3	7
20	0.75	48	12	42	1.6	26.9	7
25	1.00	62	21	46	2.0	33.7	7
32	1.25	71	22	58	2.0	42.4	7
40	1.50	72	22	66	2.0	48.3	7
50	2.00	78	26	79	2.0	60.3	8
65	2.50	79	22	89	2.3	76.1	10
80	3.00	90	33	110	2.3	88.9	10
100	4.00	98	39	141	2.6	114.3	12

Stainless Steel Only ◀ Dimensions in mm ▶

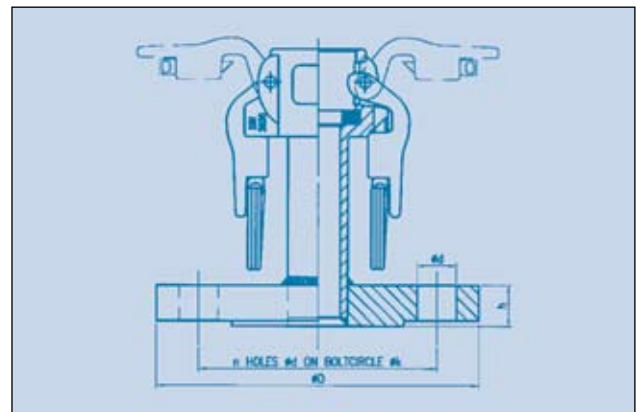
DIN FLANGED SS AUTOLOK™
733LBS-SS DIN ND 10/16



mm	inch	Ø k	Ø D	h	n	Ø d
15	0.50	65	95	14	4	14
20	0.75	75	105	16	4	14
25	1.00	85	115	16	4	14
32	1.25	100	140	16	4	18
40	1.50	110	150	16	4	18
50	2.00	125	165	18	4	18
65	2.50	145	185	18	4	18
80	3.00	160	200	20	8	18

Stainless Steel Only ◀ Dimensions in mm ▶

ANSI FLANGED SS AUTOLOK™
733LBS-SS ANSI 150 lbs



mm	inch	Ø k	Ø D	h	n	Ø d
15	0.50	60.5	88.9	11.2	4	15.7
20	0.75	69.9	98.6	12.7	4	15.7
25	1.00	79.2	108.0	14.2	4	15.7
32	1.25	88.9	117.3	15.7	4	15.7
40	1.50	98.6	127.0	17.5	4	15.7
50	2.00	102.7	152.4	19.1	4	19.1
65	2.50	—	—	—	—	—
80	3.00	152.4	190.5	23.9	4	19.1

Stainless Steel Only ◀ Dimensions in mm ▶