



Racores para mangueras
Hose Couplings

TW DIN 28450, Kamlok, Autolock, Guillemin, Storz, Racores y Abrazaderas de seguridad DIN 2817, Vapor, Barcelona, Aire comprimido, Alimentación y sanitarios, Bidas. TW DIN 28450, Kamlok, Autolock, Guillemin, Storz, Safety Clamps and Couplings DIN 2817, Steam, Barcelona type, Compressed air, Sanitary and food, Flanges.



COMERCIAL GASSÓ

Catálogo General Gassó de racores

Gassó technical couplings General Catalogue

Índice

Racores TW DIN 28450, 3.

RACORES MK - VK	página 3
RACORES VB (tapón)	página 3
RACORES MB (tapón)	página 4
RACORES VKS - MKS	página 4
JUNTAS	página 5

Racores rápidos Kamlok, 6.

Tipo 633-A	página 6
Tipo 633-B	página 7
Tipo 633-C	página 7
Tipo 633-D	página 8
Tipo 633-E	página 9
Tipo 633-F	página 9
Tipo 634-A (tapón)	página 10
Tipo 634-B (acople tapón)	página 11
Tipo 633-LAS (Adaptador con brida)	página 12
Tipo 633-LBS (Acople con brida)	página 12
Accesorios: palancas y juntas	página 12, 13

Racores rápidos de seguridad Autolock, 15.

Tipo 733-B	página 15
Tipo 733-C	página 15
Tipo 733-D	página 15
Tipo 733-DP (tapón)	página 15

Racores rápidos Guillemín, 16.

Para manguera	página 16
Hembra sin cierre	página 17
Macho sin cierre	página 17
Hembra con cierre	página 18
Macho con cierre	página 19
Tapón	página 19
Reducción	página 20
Juntas	página 21
Llaves cierre	página 21

Racores rápidos Storz, 22.

Impulsión para manguera	página 22
Aspiración para manguera	página 22
Rosca hembra	página 23
Rosca macho	página 23
Reducción	página 24
Tapón	página 24
Juntas	página 24

Abrazaderas de seguridad DIN 2817, 25.

Tornillo	página 25
Pasador Kombifix	página 26

Racores con abrazadera de seguridad, 27.

VSL, macho	página 27
MSL, hembra	página 27
VSS, macho para vapor	página 28
MSS, hembra para vapor	página 28

Racores para vapor, 29.

Boquilla	página 29
Tuerca	página 29
Reducción	página 29
Macho	página 29
Mordazas	página 30

Racores Barcelona, 31.

Para manguera	página 31
Hembra	página 31
Macho	página 31
Reducción	página 31
Juntas	página 31

Racores para aire comprimido, 32.

Express	página 32
Compresor	página 32

Para alimentación y sanitarios DIN 11859, 33.

Racores NW manguera , tuerca, casquillo	página 33
Juntas	página 34
Clamp manguera, abrazadera, casquillo	página 35
Juntas	página 36

Bridas, 37.

DIN, plana para soldar	página 37
ASA, welding neck	página 39
ASA, lap-joint	página 40
ASA, slip-on	página 41

Otros racores,

.....	página 42
-------	-----------

Tablas de resistencia química,

.....	página 43
-------	-----------

Index

TW DIN 28450 couplings, 3.

MK - VK couplings	page 3
VB (cap)	page 3
MB (cap)	page 4
VKS -MKS couplings	page 4
Seals	page 5

Kamlok, quick couplings, 6.

633-A type	page 6
633-B type	page 7
633-C type	page 7
633-D type	page 8
633-E type	page 9
633-F type	page 9
634-A type (dust plug)	page 10
634-B type (dust cap)	page 11
633- LAS (Flange adapter)	page 12
633-LBS (Flange adapter)	page 12
Accessories: handle and seals	page 12, 13

Autolock, safety quick couplings, 15.

733-B type	page 15
733-C type	page 15
733-D type	page 15
733-DP (dust plug)	page 15

Guillemin, symmetrical couplings, 16.

Hose	page 16
Female coupler without lock	page 17
Male coupler without lock	page 17
Female coupler with lock	page 18
Male coupler with lock	page 19
Dust plug	page 19
Reduction	page 20
Seals	page 21
Wrenches	page 21

Storz, quick couplings, 22.

Delivery hose	page 22
Suction hose	page 22
Female thread	page 23
Male thread	page 23
Reduction	page 24
Dust plug	page 24
Seals	page 24

Safety Clamps DIN 2817, 25.

Bolt	page 25
Pined clamps, Kombifix	page 26

Couplings for safety clamps, 27.

VSL, male	page 27
MSL, female	page 27
VSS, steam male	page 28
MSS, steam female	page 28

Steam couplings, 29.

Stem Boss	page 29
Wing nut thread	page 29
Female spud x Wing nut thread	page 29
Male stem	page 29
Bolt clamp	page 30

Barcelona type couplings, 31.

For hose	page 31
Female	page 31
Male	page 31
Reduction	page 31
Seals	page 31

Compressed air couplings, 32.

Express	page 32
Compressor	page 32

Sanitary and food couplings DIN 11859, 33.

NW, thread, ferrule	page 33
Seals	page 34
Hose clamp, clamp, ferrule	page 35
Seals	page 36

Flanges, 37.

DIN	page 37
ASA, welding neck	page 39
ASA, lap-joint	page 40
ASA, slip-on	page 41

Other couplings,

.....	page 42
-------	---------

Chemical resistant charts,

.....	page 43
-------	---------

Translation of materials

Aluminium (aluminio), brass (latón), carbon steel (acero), stainless steel 316 (inox 316), polypropilene (polipropileno).

TW DIN 28450 Couplings

Norma Racores según DIN 28450 | Norm Couplings according DIN 28450

Ref. Gassó	Tamaño Size	Rosca Thread	Material	Peso Weight (Kg)
------------	-------------	--------------	----------	------------------

VK ADAPTADOR MACHO ROSCA HEMBRA | ADAPTER WITH FEMALE THREAD

EDA010	50	G 2"	LATÓN	0,36
EDA012	80	G 3"	LATÓN	0,75
EDA014	100	G 4"	LATÓN	1,10
EDA011	50	G 2"	INOX-SS	0,31
EDA013	80	G 3"	INOX-316	0,73
EDA015	100	G 4"	INOX-316	1,15



MK ACOPLER ROSCA HEMBRA | UNION COUPLERS WITH FEMALE THREAD

EDA000	50	G 2"	LATÓN	0,73
EDA002	80	G 3"	LATÓN	1,55
EDA004	100	G 4"	LATÓN	2,75
EDA001	50	G 2"	INOX-316	0,69
EDA003	80	G 3"	INOX-316	1,45
EDA005	100	G 4"	INOX-316	2,75



Ref. Gassó	Tamaño Size	Material	Peso Weight (kg)
------------	-------------	----------	------------------

MK CORONA | SEALING RINGS

EDA071	50	LATÓN	—
EDA072	80	LATÓN	—
EDA073	100	LATÓN	—
EDA074	50	INOX-SS	—
EDA075	80	INOX-SS	—
EDA076	100	INOX-SS	—



MK MANETA PARA CORONA | CLAMPING RING WITH HANDLE

EZZ012	50	LATÓN	—
EZZ001	80	LATÓN	—
EZZ013	100	LATÓN	—
EZZ014	50	INOX-316	—
EZZ015	80	INOX-316	—
EZZ016	100	INOX-316	—



VB TAPÓN CON AGUJERO PARA CADENAS | CAP WITH HOLE FOR CHAIN

EDA029	50	ALUMINIO	0,14
EDA033	80	ALUMINIO	0,30
EDA036	100	ALUMINIO	0,45
EDA030	50	LATÓN	0,32
EDA032	80	LATÓN	0,85
EDA035	100	LATÓN	—
EDA031	50	INOX-316	0,31
EDA034	80	INOX-316	0,76
EDA037	100	INOX-316	1,15
EDA039	80	POLIAMIDA	0,12
EDA038	100	POLIAMIDA	0,16



Ref. Gassó	Tamaño Size	Material	Peso Weight (kg)
MB TAPÓN CON AGUJERO PARA CADENA CAP WITH HOLE FOR CHAIN			
EDA019	50	ALUMINIO	0,13
EDA023	80	ALUMINIO	0,25
EDA026	100	ALUMINIO	0,47
EDA020	50	LATÓN	0,35
EDA022	80	LATÓN	0,87
EDA025	100	LATÓN	—
EDA021	50	INOX-316	0,30
EDA024	80	INOX-316	0,66
EDA027	100	INOX-316	1,20
—	50	POLIAMIDA	0,05



Ref. Gassó	Tamaño Size	DN (mm)	Material	Peso Weight (kg)
VKS ADAPTADOR PARA MANGUERA COUPLER SHANK				
EDA110	50	50x8	LATÓN	1,10
EDA112	80	75x8	LATÓN	2,20
EDA114	100	100x8	LATÓN	4,35
EDA111	50	50x8	INOX-316	0,92
EDA113	80	75x8	INOX-316	1,85
EDA115	100	100x8	INOX-316	3,85



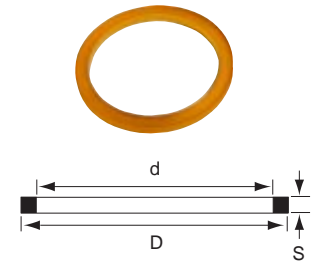
Ref. Gassó	Tamaño Size	DN (mm)	Material	Peso Weight (kg)
MKS ACOPLE PARA MANGUERA COUPLER SHANK				
EDA100	50	50x8	LATÓN	1,45
EDA102	80	75x8	LATÓN	3,00
EDA104	100	100x8	LATÓN	6,00
EDA101	50	50x8	INOX-316	1,30
EDA103	80	75x8	INOX-316	2,55
EDA105	100	100x8	INOX-316	5,45



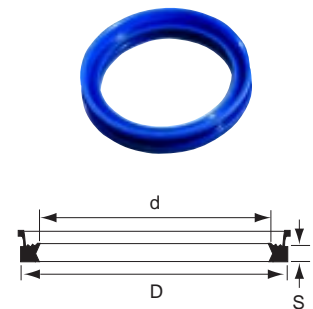
Seals DIN 28450

Norma Racores según DIN 28450 | Norm Couplings according DIN 28450

Ref. Gassó	Tamaño Size	D (mm)	d (mm)	s (mm)	Material	Peso Weight (g)
JUNTAS PLANAS PARA VK Y MB SEALS FOR VK AND MB						
EDA153	50	61,5	49	4,8	HYPALON	7
EDA178	80	92	77	6	HIYALON	16
—	100	114	100	7	HYPALON	20
EDA151	50	61,5	49	4,8	PERBUNAN	6
EDA176	80	92	77	6	PERBUNAN	16
—	100	114	100	7	PERBUNAN	16
EDA150	50	61,5	49	4,8	VULKOLLAN	7
EDA175	80	92	77	6	VULKOLLAN	15
EDA154	50	61,5	49	4,5	TEFLON	11
EDA179	80	90	77	5,5	TEFLON	25
—	100	114	100	7	TEFLON	26
EDA152	50	61,5	49	4,8	VITON	10
EDA177	80	92	77	6	VITON	21
—	100	114	100	7	VITON	28



Ref. Gassó	Tamaño Size	D (mm)	d (mm)	s (mm)	Material	Peso Weight (g)
JUNTAS LABIALES PARA MK SEALS FOR MK						
EDA253	50	61,5	49	4,8	HYPALON	11
EDA278	80	92	77	6	HIYALON	23
EDA202	100	114	100	7	HIYALON	20
EDA251	50	61,5	49	4,8	PERBUNAN	9
EDA276	80	92	77	6	PERBUNAN	18
EDA200	100	114	100	7	PERBUNAN	16
EDA250	50	61,5	49	4,8	VULKOLLAN	8
EDA275	80	92	77	6	VULKOLLAN	15
—	100	114	100	7	VULKOLLAN	—
EDA252	50	61,5	49	4,8	VITON	12
EDA277	80	92	77	6	VITON	27
EDA201	100	114	77	7	VITON	28
EDA203	100	114	100	7	TEFLON	26



Ref. Gassó	Tamaño Size	Material	Peso Weight (g)
CADENAS PARA TAPONES CHAIN FOR PLUGS			
EDA050	200	LATÓN	20
EDA051	300	LATÓN	30
EDA049	200	INOX-316	20



KAMLOK quick couplings

Norma Racores según MIL-C-27487 / DIN 12115. | Norm Couplings according MIL-C-27487 / DIN 12115.

Ref. Gassó	Tamaño Size	Rosca Thread	Material	Peso Weight (kg)
633-A ADAPTADOR CON ROSCA HEMBRA ADAPTOR FEMALE THREAD				
BAA100	1/2"	G 1/2"	ALUMINIO	—
BBA002	3/4"	G 3/4"	ALUMINIO	0,05
BBA003	1"	G 1"	ALUMINIO	0,06
BBA004	1 1/4"	G 1 1/4"	ALUMINIO	0,09
BBA005	1 1/2"	G 1 1/2"	ALUMINIO	0,13
BBA006	2"	G 2"	ALUMINIO	0,18
BBA007	2 1/2"	G 2 1/2"	ALUMINIO	0,37
BBA008	3"	G 3"	ALUMINIO	0,52
BBA009	4"	G 4"	ALUMINIO	0,81
BBA010	6"	G 6"	ALUMINIO	1,10
BBA011	5"	G 5"	ALUMINIO	0,74
BAA111	1/2"	G 1/2"	LATÓN	—
BBA202	3/4"	G 3/4"	LATÓN	0,14
BBA203	1"	G 1"	LATÓN	0,20
BBA204	1 1/4"	G 1 1/4"	LATÓN	0,30
BBA205	1 1/2"	G 1 1/2"	LATÓN	0,42
BBA206	2"	G 2"	LATÓN	0,53
BBA207	2 1/2"	G 2 1/2"	LATÓN	1,20
BBA208	3"	G 3"	LATÓN	1,13
BBA209	4"	G 4"	LATÓN	1,90
BBA210	5"	G 5"	LATÓN	—
—	6"	G 6"	LATÓN	3,49
BAA129	1/2"	G 1/2"	INOX-316	—
BBA402	3/4"	G 3/4"	INOX-316	0,14
BBA403	1"	G 1"	INOX-316	0,19
BBA404	1 1/4"	G 1 1/4"	INOX-316	0,25
BBA405	1 1/2"	G 1 1/2"	INOX-316	0,39
BBA406	2"	G 2"	INOX-316	0,50
BBA407	2 1/2"	G 2 1/2"	INOX-316	0,84
BBA408	3"	G 3"	INOX-316	1,12
BBA409	4"	G 4"	INOX-316	1,90
BBA410	6"	G 6"	INOX-316	3,07
BBA411	5"	G 5"	INOX-316	—
BBA602	3/4"	G 3/4"	POLIPROPILENO	0,03
BBA603	1"	G 1"	POLIPROPILENO	0,04
BBA605	1 1/2"	G 1 1/2"	POLIPROPILENO	0,08
BBA606	2"	G 2"	POLIPROPILENO	0,11
BBA608	3"	G 3"	POLIPROPILENO	0,22



KAMLOK quick couplings

Norma Racores según MIL-C-27487 / DIN 12115. | Norm Couplings according MIL-C-27487 / DIN 12115.

Ref. Gassó	Tamaño Size	Rosca Thread	Material	Peso Weight (Kg)
------------	-------------	--------------	----------	------------------

633-B ACOPLE ROSCA MACHO | COUPLER MALE

BAB100	1/2"	G 1/2"	ALUMINIO	—
BBB002	3/4"	G 3/4"	ALUMINIO	0,09
BBB003	1"	G 1"	ALUMINIO	0,16
BBB004	1 1/4"	G 1 1/4"	ALUMINIO	0,31
BBB005	1 1/2"	G 1 1/2"	ALUMINIO	0,31
BBB006	2"	G 2"	ALUMINIO	0,38
BBB007	2 1/2"	G 2 1/2"	ALUMINIO	0,53
BBB008	3"	G 3"	ALUMINIO	0,75
BBB009	4"	G 4"	ALUMINIO	1,09
BAB111	1/2"	G 1/2"	LATÓN	—
BBB202	3/4"	G 3/4"	LATÓN	0,21
BBB203	1"	G 1"	LATÓN	0,35
BBB204	1 1/4"	G 1 1/4"	LATÓN	0,64
BBB205	1 1/2"	G 1 1/2"	LATÓN	0,68
BBB206	2"	G 2"	LATÓN	0,80
BBB207	2 1/2"	G 2 1/2"	LATÓN	1,39
BBB208	3"	G 3"	LATÓN	1,78
BBB209	4"	G 4"	LATÓN	2,71
BAB129	1/2"	G 1/2"	INOX-SS	0,13
BBB702*	3/4"	G 3/4"	INOX-SS	0,26
BBB703*	1"	G 1"	INOX-SS	0,42
BBB704*	1 1/4"	G 1 1/4"	INOX-SS	0,71
BBB705*	1 1/2"	G 1 1/2"	INOX-SS	0,65
BBB706*	2"	G 2"	INOX-SS	0,87
BBB707*	2 1/2"	G 2 1/2"	INOX-SS	1,32
BBB708*	3"	G 3"	INOX-SS	1,81
BBB709*	4"	G 4"	INOX-SS	2,89
BBB602	3/4"	G 3/4"	POLIPROP	0,07
BBB603	1"	G 1"	POLIPROP	0,12
BBB605	1 1/2"	G 1 1/2"	POLIPROP	0,25
BBB606	2"	G 2"	POLIPROP	0,29
BBB608	3"	G 3"	POLIPROP	0,53



633-C ACOPLE PARA MANGUERA | COUPLER SHANK

BAC100	1/2"	13	ALUMINIO	—
BBC002	3/4"	19	ALUMINIO	0,09
BBC003	1"	25	ALUMINIO	0,17
BBC004	1 1/4"	32	ALUMINIO	0,33
BBC005	1 1/2"	38/40	ALUMINIO	0,39
BBC006	2"	50	ALUMINIO	0,46
BBC007	2 1/2"	63/65	ALUMINIO	0,51
BBC008	3"	75	ALUMINIO	0,99
BBC009	4"	100	ALUMINIO	1,33
BBC010	6"	150	ALUMINIO	3,14
BBC011	5"	125	ALUMINIO	—
BAC111	1/2"	13	LATÓN	0,17
BBC202	3/4"	19	LATÓN	0,24
BBC203	1"	25	LATÓN	0,41
BBC204	1 1/4"	32	LATÓN	0,72
BBC205	1 1/2"	38/40	LATÓN	0,75
BBC206	2"	50	LATÓN	1,04
BBC207	2 1/2"	63/65	LATÓN	1,39
BBC208	3"	75	LATÓN	2,28
BBC209	4"	100	LATÓN	3,96
—	5"	125	LATÓN	6,01
BBC210	6"	150	LATÓN	8,32
BAC130	1/2"	13	INOX-316	0,14
BBC411	5"	125	INOX-316	—
BBC410	6"	150	INOX-316	7,10
BBC602	3/4"	19	POLIPROPILENO	0,07
BBC603	1"	25	POLIPROPILENO	—
BBC604	1 1/4"	32	POLIPROPILENO	—
BBC605	1 1/2"	38/40	POLIPROPILENO	0,31



Norma Racores según MIL-C-27487 / DIN 12115. | Norm Couplings according MIL-C-27487 / DIN 12115.

Ref. Gassó	Tamaño Size	Rosca Thread	Material	Peso Weight (kg)
------------	-------------	--------------	----------	------------------

> **633-C** ACOPLE PARA MANGUERA | COUPLER SHANK

BBC606	2"	50	POLIPROPILENO	0,34
BBC608	3"	75	POLIPROPILENO	0,60
BBC702*	3/4"	19	INOX-316	0,19
BBC703*	1"	25	INOX-316	0,41
BBC704*	1 1/4"	32	INOX-316	0,67
BBC705*	1 1/2"	38/40	INOX-316	0,77
BBC706*	2"	50	INOX-316	0,94
BBC707*	2 1/2"	63/65	INOX-316	1,35
BBC708*	3"	75	INOX-316	2,06
BBC709*	4"	100	INOX-316	3,66

633-D ACOPLE ROSCA HEMBRA | COUPLER FEMALE

BAD100	1/2"	G 1/2"	ALUMINIO	—
BBD002	3/4"	G 3/4"	ALUMINIO	—
BBD003	1"	G 1"	ALUMINIO	0,16
BBD004	1 1/4"	G 1 1/4"	ALUMINIO	0,32
BBD005	1 1/2"	G 1 1/2"	ALUMINIO	0,40
BBD006	2"	G 2"	ALUMINIO	0,43
BBD007	2 1/2"	G 2 1/2"	ALUMINIO	0,62
BBD008	3"	G 3"	ALUMINIO	0,89
BBD009	4"	G 4"	ALUMINIO	1,25
-	5"	G 5"	ALUMINIO	—
BBD011	6"	G 6"	ALUMINIO	2,58
BAD111	1/2"	G 1/2"	LATÓN	—
BBD202	3/4"	G 3/4"	LATÓN	0,23
BBD203	1"	G 1"	LATÓN	0,36
BBD204	1 1/4"	G 1 1/4"	LATÓN	0,68
BBD205	1 1/2"	G 1 1/2"	LATÓN	0,99
BBD206	2"	G 2"	LATÓN	1,01
BBD207	2 1/2"	G 2 1/2"	LATÓN	1,49
BBD208	3"	G 3"	LATÓN	2,02
BBD209	4"	G 4"	LATÓN	3,27
BBD210	5"	G 5"	LATÓN	—
BBD211	6"	G 6"	LATÓN	7,30
BAD129	1/2"	G 1/2"	INOX-316	—
BBD702*	3/4"	G 3/4"	INOX-316	0,21
BBD703*	1"	G 1"	INOX-316	0,39
BBD704*	1 1/4"	G 1 1/4"	INOX-316	0,62
BBD705*	1 1/2"	G 1 1/2"	INOX-316	0,87
BBD706*	2"	G 2"	INOX-316	0,98
BBD707*	2 1/2"	G 2 1/2"	INOX-316	1,23
BBD708*	3"	G 3"	INOX-316	1,82
BBD709*	4"	G 4"	INOX-316	2,88
BBD410*	5"	G 5"	INOX-316	—
BBD411	6"	G 6"	INOX-316	8,00
BBD602	3/4"	G 3/4"	POLIPROPILENO	0,08
BBD603	1"	G 1"	POLIPROPILENO	0,13
BBD605	1 1/2"	G 1 1/2"	POLIPROPILENO	0,26
BBD606	2"	G 2"	POLIPROPILENO	0,32
BBD608	3"	G 3"	POLIPROPILENO	0,57

*Ver/See



KAMLOK quick couplings

Norma Racores según MIL-C-27487 / DIN 12115. | Norm Couplings according MIL-C-27487 / DIN 12115.

Ref. Gassó	Tamaño Size	Rosca / Manguera Hose/ Thread	Material	Peso Weight (kg)
------------	-------------	-------------------------------	----------	------------------

633-E ADAPTADOR PARA MANGUERA | ADAPTOR HOSE SHANK

BAE100	1/2"	13	ALUMINIO	—
BBE002	3/4"	19	ALUMINIO	0,06
BBE003	1"	25	ALUMINIO	0,10
BBE004	1 1/4"	32	ALUMINIO	0,15
BBE005	1 1/2"	38/40	ALUMINIO	0,21
BBE006	2"	50	ALUMINIO	0,31
BBE007	2 1/2"	63/65	ALUMINIO	0,39
BBE008	3"	75	ALUMINIO	0,60
BBE009	4"	100	ALUMINIO	1,19
BBE010	5"	100	ALUMINIO	—
BBE011	6"	100	ALUMINIO	—
BAE111	1/2"	13	LATÓN	0,12
BBE201	3/4"	19	LATÓN	0,19
BBE202	1"	25	LATÓN	0,22
BBE203	1 1/4"	32	LATÓN	0,51
BBE204	1 1/2"	38/40	LATÓN	0,53
BBE205	2"	50	LATÓN	1,00
BBE207	2 1/2"	63/65	LATÓN	1,34
BBE208	3"	75	LATÓN	1,91
BBE209	4"	100	LATÓN	3,73
BAE122	1/2"	13	INOX-316	—
BBE402	3/4"	19	INOX-316	0,16
BBE403	1"	25	INOX-316	0,26
BBE404	1 1/4"	32	INOX-316	0,44
BBE405	1 1/2"	38/40	INOX-316	0,57
BBE406	2"	50	INOX-316	0,90
BBE407	2 1/2"	63/65	INOX-316	1,21
BBE408	3"	75	INOX-316	1,70
BBE409	4"	100	INOX-316	—
BBE602	3/4"	19	POLIPROPILENO	0,02
BBE603	1"	25	POLIPROPILENO	0,04
BBE604	1 1/4"	25	POLIPROPILENO	—
BBE605	1 1/2"	38/40	POLIPROPILENO	0,14
BBE606	2"	50	POLIPROPILENO	0,15
BBE608	3"	75	POLIPROPILENO	0,62



633-F ADAPTADOR CON ROSCA MACHO | ADAPTOR MALE THREAD

BAF100	1/2"	1/2"	ALUMINIO	—
BBF002	3/4"	3/4"	ALUMINIO	0,06
BBF003	1"	1"	ALUMINIO	0,10
BBF004	1 1/4"	1 1/4"	ALUMINIO	0,16
BBF005	1 1/2"	1 1/2"	ALUMINIO	—
BBF006	2"	2"	ALUMINIO	—
BBF007	2 1/2"	2 1/2"	ALUMINIO	0,50
BBF008	3"	3"	ALUMINIO	0,67
BBF009	4"	4"	ALUMINIO	0,85
BBF010	5"	5"	ALUMINIO	—
BBF011	6"	6"	ALUMINIO	1,92
BAF111	1/2"	1/2"	LATÓN	0,12
BBF202	3/4"	3/4"	LATÓN	0,20
BBF203	1"	1"	LATÓN	0,31
BBF204	1 1/4"	1 1/4"	LATÓN	0,52
BBF205	1 1/2"	1 1/2"	LATÓN	0,63
BBF206	2"	2"	LATÓN	0,89
BBF207	2 1/2"	2 1/2"	LATÓN	1,07
BBF208	3"	3"	LATÓN	1,62
BBF209	4"	4"	LATÓN	2,78
BBF210	5"	5"	LATÓN	—
BBF211	6"	6"	LATÓN	4,80
BAF129	1/2"	1/2"	INOX-316	0,11



Norma Racores según MIL-C-27487 / DIN 12115. | **Norm** Couplings according MIL-C-27487 / DIN 12115.

Ref. Gassó	Tamaño Size	Rosca / Manguera Hose/Thread	Material	Peso Weight (Kg)
------------	-------------	------------------------------	----------	------------------

> 633-F ADAPTADOR CON ROSCA MACHO | MALE ADAPTOR THREAD

BBF402	3/4"	3/4"	INOX-316	0,18
BBF403	1"	1"	INOX-316	0,31
BBF404	1 1/4"	1 1/4"	INOX-316	0,51
BBF405	1 1/2"	1 1/2"	INOX-216	0,67
BBF406	2"	2"	INOX-316	0,97
BBF407	2 1/2"	2 1/2"	NOX-316	1,61
BBF409	4"	4"	NOX-316	3,23
BBF410	5"	5"	NOX-316	—
BBF411	6"	6"	NOX-316	4,50
BBF408	3"	3"	NOX-316	1,86
BBF602	3/4"	G 3/4"	POLIPROPILENO	—
BBF603	1"	1"	POLIPROPILENO	0,06
BBF604	1 1/4"	1 1/4"	POLIPROPILENO	—
BBF605	1 1/2"	1 1/2"	POLIPROPILENO	0,10
BBF606	2"	2"	POLIPROPILENO	0,16
BBF608	3"	3"	POLIPROPILENO	0,40



Ref. Gassó	Tamaño Size	Material	Peso Weight (Kg)
------------	-------------	----------	------------------

634-A TAPÓN | DUST PLUG

BAG100	1/2"	ALUMINIO	—
BBG002	3/4"	ALUMINIO	0,04
BBG003	1"	ALUMINIO	0,04
BBG004	1 1/4"	ALUMINIO	0,08
BBG005	1 1/2"	ALUMINIO	0,09
BBG006	2"	ALUMINIO	0,15
BBG007	2 1/2"	ALUMINIO	0,22
BBG008	3"	ALUMINIO	0,29
BBG009	4"	ALUMINIO	0,48
BAG111	1/2"	LATÓN	—
BBG202	3/4"	LATÓN	0,14
BBG203	1"	LATÓN	0,16
BBG204	1 1/4"	LATÓN	0,25
BBG205	1 1/2"	LATÓN	0,31
BBG206	2"	LATÓN	0,48
BBG207	2 1/2"	LATÓN	0,72
BBG208	3"	LATÓN	0,94
BBG209	4"	LATÓN	1,61
BAG127	1/2"	INOX-316	0,06
BBG402	3/4"	INOX-316	0,14
BBG403	1"	INOX-316	0,16
BBG404	1 1/4"	INOX-316	0,27
BBG405	1 1/2"	INOX-316	0,38
BBG406	2"	INOX-316	0,54
BBG407	2 1/2"	INOX-316	0,77
BBG408	3"	INOX-316	0,96
BBG409	4"	INOX-316	1,57
BAG122	3/4"	POLIPROPILENO	—
BBG603	1"	POLIPROPILENO	0,02
BBG605	1 1/2"	POLIPROPILENO	0,07
BBG606	2"	POLIPROPILENO	0,28
BBG608	3"	POLIPROPILENO	0,20



KAMLOK quick couplings

Norma Racores según MIL-C-27487 / DIN 12115. | Norm Couplings according MIL-C-27487 / DIN 12115.

Ref. Gassó	Tamaño Size	Material	Peso Weight (kg)
634-B ACOPLÉ TAPÓN DUST CAP			
BAH100	1/2"	ALUMINIO	—
BBH002	3/4"	ALUMINIO	0,09
BBH003	1"	ALUMINIO	0,14
BBH004	1 1/4"	ALUMINIO	0,29
BBH005	1 1/2"	ALUMINIO	0,29
BBH006	2"	ALUMINIO	0,39
BBH007	2 1/2"	ALUMINIO	0,43
BBH608	3"	ALUMINIO	0,72
BBH009	4"	ALUMINIO	0,96
BBH010	5"	ALUMINIO	—
BBH011	6"	ALUMINIO	1,86
BAH111	1/2"	LATÓN	—
BBH202	3/4"	LATÓN	0,21
BBH203	1"	LATÓN	—
BBH204	1 1/4"	LATÓN	0,64
BBH205	1 1/2"	LATÓN	0,62
BBH206	2"	LATÓN	0,78
BBH207	2 1/2"	LATÓN	1,05
BBH208	3"	LATÓN	1,61
BBH209	4"	LATÓN	2,76
—	6"	LATÓN	5,36
BAH127	1/2"	INOX-316	0,13
BBD712*	3/4"	INOX-316	0,18
BBD713*	1"	INOX-316	0,30
BBD714*	1 1/4"	INOX-316	0,56
BBD715*	1 1/2"	INOX-316	0,56
BBD716*	2"	INOX-316	0,70
BBD717*	2 1/2"	INOX-316	1,01
BBD718*	3"	INOX-316	1,46
BBD719*	4"	INOX-316	2,19
BAH122	3/4"	POLIPROPILENO	—
BBH603	1"	POLIPROPILENO	—
BBH605	1 1/2"	POLIPROPILENO	—
BBH606	2"	POLIPROPILENO	0,24
BBH608	3"	POLIPROPILENO	—



*Ver/See

Norma Racores según MIL-C-27487 / DIN 12115. | Norm Couplings according MIL-C-27487 / DIN 12115.

Ref. Gassó	Tamaño Size	Brida DIN (mm)	Material	Peso Weight (Kg)
------------	-------------	----------------	----------	------------------

ADAPTADOR 633-LAS | DIN FLANGE ADAPTER

—	1/2"	DN 15 PN 10/16	INOX-316	—
BBA415	3/4"	DN 20 PN 10/16	INOX-316	—
BBA416	1"	DN 25 PN 10/16	INOX-316	—
BBA417	1 1/4"	DN 32 PN 10/16	INOX-316	—
BBA418	1 1/2"	DN 40 PN 10/16	INOX-316	—
BBA419	2"	DN 50 PN 10/16	INOX-316	—
BBA420	2 1/2"	DN 65 PN 10/16	INOX-316	—
BBA421	3"	DN 80 PN 10/16	INOX-316	—
BBA422	4"	DN 100 PN 10/16	INOX-316	—
—	1/2"	DN 15 PN 10/16	INOX / TEFLÓN	—
BBA424	3/4"	DN 20 PN 10/16	INOX / TEFLÓN	—
BBA425	1"	DN 25 PN 10/16	INOX / TEFLÓN	—
BBA426	1 1/4"	DN 32 PN 10/16	INOX / TEFLÓN	—
BBA427	1 1/2"	DN 40 PN 10/16	INOX / TEFLÓN	—
BBA428	2"	DN 50 PN 10/16	INOX / TEFLÓN	—
BBA429	2 1/2"	DN 65 PN 10/16	INOX / TEFLÓN	—
BBA430	3"	DN 80 PN 10/16	INOX / TEFLÓN	—
BBA431	4"	DN 100 PN 10/16	INOX / TEFLÓN	—



ACOPLE 633-LBS | DIN FLANGE COUPLER

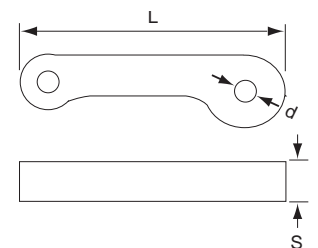
—	1/2"	DN 15 PN 10/16	INOX-316	—
—	3/4"	DN 20 PN 10/16	INOX-316	—
—	1"	DN 25 PN 10/16	INOX-316	—
—	1 1/4"	DN 32 PN 10/16	INOX-316	—
—	1 1/2"	DN 40 PN 10/16	INOX-316	—
—	2"	DN 50 PN 10/16	INOX-316	—
—	2 1/2"	DN 65 PN 10/16	INOX-316	—
—	3"	DN 80 PN 10/16	INOX-316	—
—	4"	DN 100 PN 10/16	INOX-316	—



Ref. Gassó	Tamaño Size	D/L (mm)	d (mm)	s (mm)	Material	Peso Weight (g)
------------	-------------	----------	--------	--------	----------	-----------------

PALANCA | HANDLE

BBH700	1/2"	40	4,0	7,5	ALUMINIO	18
BBH700	3/4"	40	4,0	7,5	ALUMINIO	18
BBH701	1"	48	5,4	9,5	ALUMINIO	28
BBH702	1 1/4"	67	6,3	11	ALUMINIO	67
BBH702	1 1/2"	67	6,3	11	ALUMINIO	67
BBH702	2"	67	6,3	11	ALUMINIO	67
BBH702	2 1/2"	67	6,3	11	ALUMINIO	67
BBH703	3"	78	8,0	14	ALUMINIO	125
BBH703	4"	78	8,0	14	ALUMINIO	125
BBH710	1/2"	40	4,0	7,5	INOX-316	18
BBH710	3/4"	40	4,0	7,5	INOX-316	18
BBH711	1"	48	5,4	9,5	INOX-316	28
BBH712	1 1/4"	67	6,3	11	INOX-316	67
BBH712	1 1/2"	67	6,3	11	INOX-316	67
BBH712	2"	67	6,3	11	INOX-316	67
BBH712	2 1/2"	67	6,3	11	INOX-316	67
BBH713	3"	78	8,0	14	INOX-316	125
BBH713	4"	78	8,0	14	INOX-316	125



Seals

Ref. Gassó	Tamaño Size	D (mm)	d (mm)	s (mm)	Material	Peso Weight (g)
------------	-------------	--------	--------	--------	----------	-----------------

JUNTAS | SEALS

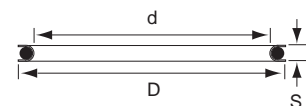
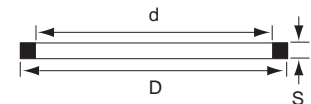
BBM000	1/2"	26	17	4	NEOPRENO	3,0
BBM001	3/4"	35	22	5,5	NEOPRENO	6,0
BBM002	1"	40	27	6,4	NEOPRENO	6,0
BBM003	1 1/4"	50	35	6,4	NEOPRENO	11,0
BBM004	1 1/2"	56	41	6,4	NEOPRENO	14,0
BBM005	2"	67	51	6,4	NEOPRENO	17,0
BBM006	2 1/2"	80	60	6,4	NEOPRENO	25,0
BBM007	3"	95	76	6,4	NEOPRENO	30,0
BBM008	4"	124	102	6,4	NEOPRENO	45,0

BBM010	1/2"	26	17	4	VITÓN	3,0
BBM011	3/4"	35	22	5,5	VITÓN	6,0
BBM012	1"	40	27	6,4	VITÓN	6,0
BBM013	1 1/4"	50	35	6,4	VITÓN	11,0
BBM014	1 1/2"	56	41	6,4	VITÓN	14,0
BBM015	2"	67	51	6,4	VITÓN	17,0
BBM016	2 1/2"	80	60	6,4	VITÓN	25,0
BBM017	3"	95	76	6,4	VITÓN	30,0
BBM018	4"	124	102	6,4	VITÓN	45,0

BBM030	1/2"	26	17	4	BUNA	3,0
BBM031	3/4"	35	22	5,5	BUNA	6,0
BBM032	1"	40	27	6,4	BUNA	6,0
BBM033	1 1/4"	50	35	6,4	BUNA	11,0
BBM034	1 1/2"	56	41	6,4	BUNA	14,0
BBM035	2"	67	51	6,4	BUNA	17,0
BBM036	2 1/2"	80	60	6,4	BUNA	25,0
BBM037	3"	95	76	6,4	BUNA	30,0
BBM038	4"	124	102	6,4	BUNA	45,0

BBM050	1/2"	26	17	4	TEFLÓN / BUNA	3,0
BBM051	3/4"	35	22	5,5	TEFLÓN / BUNA	6,0
BBM052	1"	40	27	6,4	TEFLÓN / BUNA	8,0
BBM053	1 1/4"	50	35	6,4	TEFLÓN / BUNA	11,0
BBM054	1 1/2"	56	41	6,4	TEFLÓN / BUNA	14,0
BBM055	2"	67	51	6,4	TEFLÓN / BUNA	16,0
BBM056	2 1/2"	80	60	6,4	TEFLÓN / BUNA	24,0
BBM057	3"	95	76	6,4	TEFLÓN / BUNA	29,0

BBM060	1/2"	26	17	4	TEFLÓN / VITÓN	3,0
BBM061	3/4"	35	22	5,5	TEFLÓN / VITÓN	6,0
BBM062	1"	40	27	6,4	TEFLÓN / VITÓN	8,0
BBM063	1 1/4"	50	35	6,4	TEFLÓN / VITÓN	11,0
BBM064	1 1/2"	56	41	6,4	TEFLÓN / VITÓN	14,0
BBM065	2"	67	51	6,4	TEFLÓN / VITÓN	16,0
BBM066	2 1/2"	80	60	6,4	TEFLÓN / VITÓN	24,0
BBM067	3"	95	76	6,4	TEFLÓN / VITÓN	29,0
BBM068	4"	124	102	6,4	TEFLÓN / VITÓN	43,0

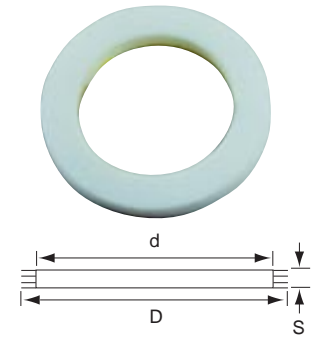
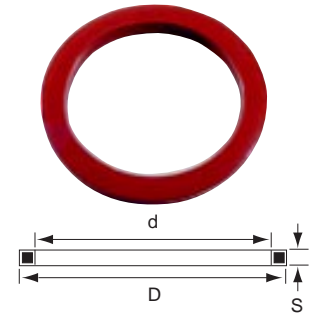


Ref. Gassó	Tamaño Size	D (mm)	d (mm)	s (mm)	Material	Peso Weight (g)
------------	-------------	--------	--------	--------	----------	-----------------

JUNTAS | SEALS

BBM070	1/2"	26	17	4	TEFLÓN ENCAPS.	—
BBM071	3/4"	35	22	5,5	TEFLÓN ENCAPS.	—
BBM072	1"	40	27	6,4	TEFLÓN ENCAPS.	7,0
BBM073	1 1/4"	50	35	6,4	TEFLÓN ENCAPS.	9,0
BBM074	1 1/2"	56	41	6,4	TEFLÓN ENCAPS.	11,0
BBM075	2"	67	51	6,4	TEFLÓN ENCAPS.	13,0
BBM076	2 1/2"	80	60	6,4	TEFLÓN ENCAPS.	20,0
BBM077	3"	95	76	6,4	TEFLÓN ENCAPS.	23,0
BBM078	4"	124	102	6,4	TEFLÓN ENCAPS.	34,0

BBM020	1/2"	26	17	4	TEFLÓN	—
BBM021	3/4"	35	22	5,5	TEFLÓN	—
BBM022	1"	40	27	6,4	TEFLÓN	—
BBM023	1 1/4"	50	35	6,4	TEFLÓN	—
BBM024	1 1/2"	56	41	6,4	TEFLÓN	—
BBM025	2"	67	51	6,4	TEFLÓN	—
BBM026	2 1/2"	80	60	6,4	TEFLÓN	—
BBM027	3"	95	76	6,4	TEFLÓN	—
BBM028	4"	124	102	6,4	TEFLÓN	—



AUTOLOCK safety quick couplings

Norma Rosca macho según BSPT ISO 2999. Rosca hembra según BSPP ISO 228/ DIN 2828.

Norm Male thread BSPT according ISO 2999. Female thread according BSPP ISO 228/ DIN 2828.

Ref. Gassó	DN Nominal (mm)	Rosca / Manguera Hose/Thread (mm)	Material	Peso Weight (kg)
---------------	--------------------	--------------------------------------	----------	---------------------

733-B ACOPLE CON ROSCA MACHO | COUPLER MALE THREAD

BBB701	1/2"	G 1/2"	INOX-316	—
BBB702	3/4"	G 3/4"	INOX-316	—
BBB703	1"	G 1"	INOX-316	—
BBB704	1 1/4"	G 1 1/4"	INOX-316	—
BBB705	1 1/2"	G 1 1/2"	INOX-316	—
BBB706	2"	G 2"	INOX-316	—
BBB707	2 1/2"	G 2 1/2"	INOX-316	—
BBB708	3"	G 3"	INOX-316	—
BBB709	4"	G 4"	INOX-316	—

733-C ACOPLE PARA MANGUERA | COUPLER SHANK

BBC702	3/4"	P/M 19	INOX-316	—
BBC703	1"	P/M 25	INOX-316	—
BBC704	1 1/4"	P/M 30	INOX-316	—
BBC705	1 1/2"	P/M 40	INOX-316	—
BBC706	2"	P/M 50	INOX-316	—
BBC707	2 1/2"	P/M 65	INOX-316	—
BBC708	3"	P/M 75	INOX-316	—
BBC709	4"	P/M 100	INOX-316	—

733-D ACOPLE CON ROSCA HEMBRA | COUPLER FEMALE THREAD

BBD701	1/2"	G 1/2"	INOX-316	—
BBD702	3/4"	G 3/2"	INOX-316	—
BBD703	1"	G 1"	INOX-316	—
BBD704	1 1/4"	G 1 1/4"	INOX-316	—
BBD705	1 1/2"	G 1 1/2"	INOX-316	—
BBD706	2"	G 2"	INOX-316	—
BBD707	2 1/2"	G 2 1/2"	INOX-316	—
BBD708	3"	G 3"	INOX-316	—
BBD709	4"	G 4"	INOX-316	—

733-DCL TAPÓN | DUST CAP

BBD712	3/4"		INOX-316	—
BBD713	1"		INOX-316	—
BBD714	1 1/4"		INOX-316	—
BBD715	1 1/2"		INOX-316	—
BBD716	2"		INOX-316	—
BBD717	2 1/2"		INOX-316	—
BBD718	3"		INOX-316	—
BBD719	4"		INOX-316	—

PALANCA | HANDLE

BBH735	1/2"		INOX-316	0,02
BBH735	3/4"		INOX-316	0,02
BBH734	1"		INOX-316	0,03
BBH734	1 1/4"		INOX-316	0,07
BBH734	1 1/2"		INOX-316	0,07
BBH734	2"		INOX-316	0,07
BBH734	2 1/2"		INOX-316	0,07
BBH736	3"		INOX-316	0,12
BBH736	4"		INOX-316	0,12



Symmetrical couplings

Norma Racores según NF E 29572. Racores PP según NF T 54064. Roscas BSP NF E 03005

Norm Couplings according NF E 29572 standard. PP couplings according NF T 54064 standard. BSP Thread according NF E 03005

Ref. Gassó	DN Nominal (mm)	Manguera Hose (mm)	Material	Peso Weight (kg)
------------	-----------------	--------------------	----------	------------------

PARA MANGUERA | HOSE TAIL COUPLINGS

FAA001	15	20	ALUMINIO	—
FAA002	20	25	ALUMINIO	—
FAA003	25	30	ALUMINIO	—
FAA004	32	35	ALUMINIO	—
FAA005	40	40	ALUMINIO	—
FAA006	40	45	ALUMINIO	—
FAA007	50	50	ALUMINIO	—
FAA008	50	55	ALUMINIO	—
FAA009	65	70	ALUMINIO	—
FAA010	80	75	ALUMINIO	—
FAA011	80	80	ALUMINIO	—
FAA012	80	90	ALUMINIO	—
FAA013	100	100	ALUMINIO	—
FAA014	100	110	ALUMINIO	—
FAA200	15	20	BRONCE	—
FAA201	20	25	BRONCE	—
FAA202	25	30	BRONCE	—
FAA203	32	35	BRONCE	—
FAA204	40	45	BRONCE	—
FAA205	50	55	BRONCE	—
FAA206	65	70	BRONCE	—
FAA207	80	80	BRONCE	—
FAA208	80	90	BRONCE	—
FAA209	100	110	BRONCE	—
FAA210	80	75	BRONCE	—
FAA211	50	50	BRONCE	—
FAA212	100	100	BRONCE	—
FAA401	15	20	INOX-316	—
FAA402	20	25	INOX-316	—
FAA403	25	30	INOX-316	—
FAA404	30	35	INOX-316	—
FAA405	40	45	INOX-316	—
FAA406	50	50	INOX-316	—
FAA407	50	55	INOX-316	—
FAA408	65	70	INOX-316	—
FAA409	80	75	INOX-316	—
FAA410	80	80	INOX-316	—
FAA411	80	90	INOX-316	—
FAA412	100	100	INOX-316	—
FAA305	40	40	POLIPROPILENO	—
FAA306	40	45	POLIPROPILENO	—
FAA308	50	50	POLIPROPILENO	—
FAA310	50	55	POLIPROPILENO	—
FAA311	80	75	POLIPROPILENO	—
FAA312	80	90	POLIPROPILENO	—



Symmetrical couplings

Norma Racores según NF E 29572. Racores PP según NF T 54064. Roscas BSP NF E 03005

Norm Couplings according NF E 29572 standard. PP couplings according NF T 54064 standard. BSP Thread according NF E 03005

Ref. Gassó	DN Nominal (mm)	Rosca / Manguera Hose / Thread (mm)	Material	Peso Weight (kg)
HEMBRA SIN CIERRE FEMALE THREAD WITHOUT LOCK				
FAE001	20	3/4"	ALUMINIO	—
FAE002	25	1"	ALUMINIO	—
FAE003	32	1 1/4"	ALUMINIO	—
FAE004	40	1 1/2"	ALUMINIO	—
FAE005	50	2"	ALUMINIO	—
FAE006	65	2 1/2"	ALUMINIO	—
FAE007	80	3"	ALUMINIO	—
FAE008	100	4"	ALUMINIO	—
FAE201	20	3/4"	BRONCE	—
FAE202	25	1"	BRONCE	—
FAE203	32	1 1/4"	BRONCE	—
FAE204	40	1 1/2"	BRONCE	—
FAE205	50	2"	BRONCE	—
FAE206	65	2 1/2"	BRONCE	—
FAE207	80	3"	BRONCE	—
FAE208	100	4"	BRONCE	—
FAE401	15	1/2"	INOX-316	—
FAE402	20	3/4"	INOX-316	—
FAE403	25	1"	INOX-316	—
FAE404	32	1 1/4"	INOX-316	—
FAE405	40	1 1/2"	INOX-316	—
FAE406	50	2"	INOX-316	—
FAE407	65	2 1/2"	INOX-316	—
FAE408	80	3"	INOX-316	—
FAE409	100	4"	INOX-316	—
—	20	3/4"	POLIPROPILENO	—
—	25	1"	POLIPROPILENO	—
—	30	1 1/4"	POLIPROPILENO	—
FAE304	40	1 1/2"	POLIPROPILENO	—
FAE306	50	2"	POLIPROPILENO	—
FAE307	65	2 1/2"	POLIPROPILENO	—
—	80	3"	POLIPROPILENO	—
—	100	4"	POLIPROPILENO	—



MACHO SIN CIERRE | MALE THREAD WITHOUT LOCK

FAC002	20	3/4"	ALUMINIO	—
FAC003	25	1"	ALUMINIO	—
FAC004	32	1 1/4"	ALUMINIO	—
FAC005	40	1 1/2"	ALUMINIO	—
FAC006	50	2"	ALUMINIO	—
FAC007	65	2 1/2"	ALUMINIO	—
FAC008	80	3"	ALUMINIO	—
FAC009	100	4"	ALUMINIO	—
FAC201	20	3/4"	BRONCE	—
FAC202	25	1"	BRONCE	—
FAC203	30	1 1/4"	BRONCE	—
FAC204	40	1 1/2"	BRONCE	—
FAC205	50	2"	BRONCE	—
FAC206	65	2 1/2"	BRONCE	—
FAC207	80	3"	BRONCE	—
FAC208	100	4"	BRONCE	—
FAC401	15	1/2"	INOX-316	—
FAC402	20	3/4"	INOX-316	—
FAC403	25	1"	INOX-316	—
FAC404	32	1 1/4"	INOX-316	—
FAC405	40	1 1/2"	INOX-316	—



Norma Racores según NF E 29572. Racores PP según NF T 54064. Roscas BSP NF E 03005

Norm Couplings according NF E 29572 standard. PP couplings according NF T 54064 standard. BSP Thread according NF E 03005

Ref. Gassó	DN Nominal (mm)	Rosca Thread (mm)	Material	Peso Weight
------------	-----------------	-------------------	----------	-------------

> RACOR ROSCA MACHO SIN CIERRE | COUPLER MALE THREAD WITHOUT LOCK

FAC406	50	2"	INOX-316	—
FAC407	65	2 1/2"	INOX-316	—
FAC408	80	3"	INOX-316	—
FAC409	100	4"	INOX-316	—
—	20	3/4"	POLIPROPILENO	—
—	25	1"	POLIPROPILENO	—
—	30	1 1/4"	POLIPROPILENO	—
FAC303	40	1 1/2"	POLIPROPILENO	—
FAC305	50	2"	POLIPROPILENO	—
—	65	2 1/2"	POLIPROPILENO	—
FAC307	80	3"	POLIPROPILENO	—
—	100	4"	POLIPROPILENO	—

HEMBRA CON CIERRE | FEMALE WITH LOCK

FAD001	20	3/4"	ALUMINIO	—
FAD002	25	1"	ALUMINIO	—
FAD003	32	1 1/4"	ALUMINIO	—
FAD004	40	1 1/2"	ALUMINIO	—
FAD005	50	2"	ALUMINIO	—
FAD006	65	2 1/2"	ALUMINIO	—
FAD007	80	3"	ALUMINIO	—
FAD008	100	4"	ALUMINIO	—
FAD201	15	1/2"	BRONCE	—
FAD202	20	3/4"	BRONCE	—
FAD204	25	1"	BRONCE	—
FAD205	32	1 1/4"	BRONCE	—
FAD206	40	1 1/2"	BRONCE	—
FAD209	50	2"	BRONCE	—
FAD210	65	2 1/2"	BRONCE	—
FAD211	80	3"	BRONCE	—
FAD212	100	4"	BRONCE	—
FAD401	15	1/2"	INOX-316	—
FAD402	20	3/4"	INOX-316	—
FAD403	25	1"	INOX-316	—
FAD404	32	1 1/4"	INOX-316	—
FAD405	40	1 1/2"	INOX-316	—
FAD406	50	2"	INOX-316	—
FAD407	65	2 1/2"	INOX-316	—
FAD408	80	3"	INOX-316	—
FAD409	100	4"	INOX-316	—
—	20	3/4"	POLIPROPILENO	—
—	25	1"	POLIPROPILENO	—
—	30	1 1/4"	POLIPROPILENO	—
FAD303	40	1 1/2"	POLIPROPILENO	—
FAD305	50	2"	POLIPROPILENO	—
—	65	2 1/2"	POLIPROPILENO	—
FAD307	80	3"	POLIPROPILENO	—
FAD308	100	4"	POLIPROPILENO	—



Symmetrical couplings

Ref. Gassó	DN Nominal (mm)	Rosca Thread (mm)	Material	Peso Weight (kg)
MACHO CON CIERRE MALE WITH LOCK				
FAB001	20	3/4"	ALUMINIO	—
FAB002	25	1"	ALUMINIO	—
FAB003	30	1 1/4"	ALUMINIO	—
FAB004	40	1 1/2"	ALUMINIO	—
FAB005	50	2"	ALUMINIO	—
FAB006	65	2 1/2"	ALUMINIO	—
FAB007	80	3"	ALUMINIO	—
FAB008	100	4"	ALUMINIO	—
FAB201	15	1/2"	BRONCE	—
FAB202	20	3/4"	BRONCE	—
FAB203	25	1"	BRONCE	—
FAB204	30	1 1/4"	BRONCE	—
FAB205	40	1 1/2"	BRONCE	—
FAB206	50	2"	BRONCE	—
FAB207	65	2 1/2"	BRONCE	—
FAB208	80	3"	BRONCE	—
FAB209	100	4"	BRONCE	—
FAB401	15	1/2"	INOX-316	—
FAB402	20	3/4"	INOX-316	—
FAB403	25	1"	INOX-316	—
FAB404	30	1 1/4"	INOX-316	—
FAB405	40	1 1/2"	INOX-316	—
FAB406	50	2"	INOX-316	—
FAB407	65	2 1/2"	INOX-316	—
FAB408	80	3"	INOX-316	—
FAB409	100	4"	INOX-316	—
—	20	3/4"	POLIPROPILENO	—
—	25	1"	POLIPROPILENO	—
—	30	1 1/4"	POLIPROPILENO	—
FAB305	40	1 1/2"	POLIPROPILENO	—
FAB306	50	2"	POLIPROPILENO	—
—	65	2 1/2"	POLIPROPILENO	—
FAB308	80	3"	POLIPROPILENO	—
FAB309	100	4"	POLIPROPILENO	—



Ref. Gassó	Tamaño Size	Material	Peso Weight (kg)
TAPÓN CON CIERRE PLUGS WITH LOCK			
FAF001	20	ALUMINIO	—
FAF002	25	ALUMINIO	—
FAF203	32	ALUMINIO	—
FAF003	82	ALUMINIO	—
FAF004	40	ALUMINIO	—
FAF005	50	ALUMINIO	—
FAF006	65	ALUMINIO	—
FAF007	80	ALUMINIO	—
FAF200	15	BRONCE	—
FAF201	25	BRONCE	—
FAF202	30	BRONCE	—
FAF204	40	BRONCE	—
FAF205	50	BRONCE	—
FAF205	65	BRONCE	—
FAF207	80	BRONCE	—
FAF401	15	INOX-316	—
FAF402	20	INOX-316	—
FAF403	25	INOX-316	—



Norma Racores según NF E 29572. Racores PP según NF T 54064. Roscas BSP NF E 03005
Norm Couplings according NF E 29572 standard. PP couplings according NF T 54064 standard. BSP Thread according NF E 03005

Ref. Gassó	Tamaño Size	Material	Peso Weight (kg)
------------	-------------	----------	------------------

> TAPÓN CON CIERRE | PLUGS WITH LOCK

FAF404	32	INOX-316	—
FAF405	40	INOX-316	—
FAF406	50	INOX-316	—
FAF407	65	INOX-316	—
FAF408	80	INOX-316	—
-	20	POLIPROPILENO	—
-	25	POLIPROPILENO	—
-	30	POLIPROPILENO	—
FAF304	40	POLIPROPILENO	—
FAF305	50	POLIPROPILENO	—
-	65	POLIPROPILENO	—
FAF308	80	POLIPROPILENO	—

Ref. Gassó	DN (mm)	DN (mm)	Material	Peso Weight (kg)
------------	---------	---------	----------	------------------

REDUCCIÓN CON CIERRE | REDUCTIONS

FAG001	20	40	ALUMINIO	—
FAG002	25	50	ALUMINIO	—
FAG003	32	40	ALUMINIO	—
FAG004	40	50	ALUMINIO	—
FAG005	40	65	ALUMINIO	—
FAG006	40	80	ALUMINIO	—
FAG007	50	65	ALUMINIO	—
FAG008	50	80	ALUMINIO	—
FAG009	50	100	ALUMINIO	—
FAG010	65	80	ALUMINIO	—
FAG011	65	100	ALUMINIO	—
FAG012	80	100	ALUMINIO	—
FAG201	20	40	BRONCE	—
FAG202	25	40	BRONCE	—
—	30	40	BRONCE	—
FAG203	40	50	BRONCE	—
FAG204	40	65	BRONCE	—
FAG205	40	80	BRONCE	—
FAG206	50	65	BRONCE	—
FAG207	50	80	BRONCE	—
—	50	100	BRONCE	—
FAG208	65	80	BRONCE	—
FAG209	65	100	BRONCE	—
FAG210	80	100	BRONCE	—
—	20	40	INOX-316	—
FAG405	25	50	INOX-316	—
—	30	40	INOX-316	—
—	40	50	INOX-316	—
—	40	65	INOX-316	—
—	40	80	INOX-316	—
—	50	65	INOX-316	—
FAG415	50	80	INOX-316	—
—	50	100	INOX-316	—
FAG416	65	80	INOX-316	—
—	65	100	INOX-316	—
FAG424	80	100	INOX-316	—
—	20	40	POLIPROPILENO	—
—	30	40	POLIPROPILENO	—
—	40	50	POLIPROPILENO	—
—	40	65	POLIPROPILENO	—
—	40	80	POLIPROPILENO	—
—	50	65	POLIPROPILENO	—
FAG315	50	80	POLIPROPILENO	—
—	50	100	POLIPROPILENO	—
—	65	80	POLIPROPILENO	—
—	65	100	POLIPROPILENO	—
—	80	100	POLIPROPILENO	—



Symmetrical couplings Seals

Norma Racores según NF E 29572. Racores PP según NF T 54064. Roscas BSP NF E 03005

Norm Couplings according NF E 29572 standard. PP couplings according NF T 54064 standard. BSP Thread according NF E 03005

Ref. Gassó	Tamaño Size	Ø D (mm)	E (mm)	H (mm)	Material	Peso Weight (kg)
------------	-------------	----------	--------	--------	----------	------------------

EPDM BLANCO ATÓXICO | ATOXIC WHITE

—	15	17	2,5	3,5	EPDM	—
FJA011	20	22,5	2,5	3,5	EPDM	—
—	25	26,7	3,5	4	EPDM	—
—	32	31,5	3	4,5	EPDM	—
FJA014	40	42,5	4	5	EPDM	—
FJA105	50	53	5	5	EPDM	—
FJA106	65	68	5	6	EPDM	—
FJA107	80	84	5,5	6	EPDM	—
FJA108	100	102,5	7	7	EPDM	—



VITON NEGRO | BLACK

FJC000	15	17	2,5	3,5	VITÓN	—
FJC001	20	22,5	2,5	3,5	VITÓN	—
FJC002	25	26,7	3,5	4	VITÓN	—
FJC003	32	31,5	3	4,5	VITÓN	—
FJC004	40	42,5	4	5	VITÓN	—
FJC005	50	53	5	5	VITÓN	—
FJC006	65	68	5	6	VITÓN	—
FJC007	80	84	5,5	6	VITÓN	—
FJC008	100	102,5	7	7	VITÓN	—



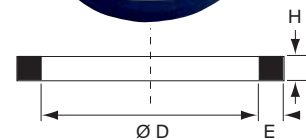
TEFLÓN (PTFE)

—	15	17	2,5	3,2	PTFE	—
FJB001	20	23	2,5	3,2	PTFE	—
FJB002	25	27,2	3,5	3,7	PTFE	—
FJB003	32	32	3	4,2	PTFE	—
FJB004	40	43	4	4,7	PTFE	—
FJB005	50	54	5	4,7	PTFE	—
FJB006	65	69	5	5,5	PTFE	—
FJB007	80	85	5,5	5,5	PTFE	—
FJB008	100	103,5	7	6,5	PTFE	—



NBR NEGRO | BLACK

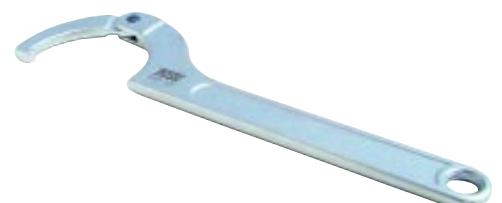
FJA000	15	17	2,5	3,5	NBR	—
FJA001	20	22,5	2,5	3,5	NBR	—
FJA002	25	26,7	3,5	4	NBR	—
FJA003	32	31,5	3	4,5	NBR	—
FJA004	40	42,5	4	5	NBR	—
FJA005	50	53	5	5	NBR	—
FJA006	65	68	5	6	NBR	—
FJA007	80	84	5,5	6	NBR	—
FJA008	100	102,5	7	7	NBR	—



Ref. Gassó	Tamaño Size	num	Material	Peso Weight (Kg)
------------	-------------	-----	----------	------------------

LLAVES CIERE | WRENCHES

GAA000	15-35	0	INOX-316	—
GAA001	35-50	1	INOX-316	—
GAA002	50-80	2	INOX-316	—
GAA003	80-120	3	INOX-316	—
GAA004	120-180	4	INOX-316	—

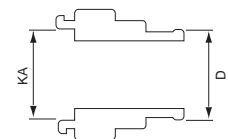


STORZ, Quick Couplings

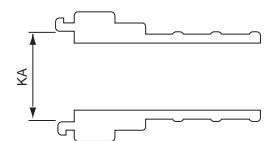
Norma Racores según DIN PN16. Roscas según ISO 228.1

Norm Couplings according DIN PN16. Thread according ISO 228.1

Ref. Gassó	Tamaño Size (mm)	D Hose tail	KA Dist. garras	Material	Peso Weight (Kg)
IMPULSION PARA MANGUERAS DELIVERY HOSE COUPLINGS					
—	D	15	31	ALUMINIO	—
—	D	19	31	ALUMINIO	—
—	D	25	31	ALUMINIO	—
CCA047	D	40	66	ALUMINIO	—
CCA010	C	45	66	ALUMINIO	—
CCA011	C	52	66	ALUMINIO	—
CCA012	B	70	89	ALUMINIO	—
CCA013	B	75	89	ALUMINIO	—
—	A	100	133	ALUMINIO	—
—	—	150	160	ALUMINIO	—
—	D	15	31	BRONCE	—
—	D	19	31	BRONCE	—
—	D	25	31	BRONCE	—
—	C	52	66	BRONCE	—
—	B	75	89	BRONCE	—
—	D	19	31	INOX-316	—
—	D	25	31	INOX-316	—
—	C	52	66	INOX-316	—
—	B	75	89	INOX-316	—
—	—	150	160	INOX-316	—



Ref. Gassó	Tamaño Size (mm)	D Hose tail	KA Dist. garras	Material	Peso Weight (Kg)
ASPIRACIÓN PARA MANGUERAS SUCTION HOSES					
CCA009	D	19	31	ALUMINIO	—
CCA001	D	25	31	ALUMINIO	—
CCA053	C	25	66	ALUMINIO	—
CCA054	C	32	66	ALUMINIO	—
CCA046	C	38	66	ALUMINIO	—
CCA055	C	40	66	ALUMINIO	—
CCA008	C	45	66	ALUMINIO	—
CCA002	C	52	66	ALUMINIO	—
CCA058	C	60	66	ALUMINIO	—
CCA021	—	65	81	ALUMINIO	—
CCA056	B	65	89	ALUMINIO	—
CCA057	B	70	89	ALUMINIO	—
CCA003	B	75	89	ALUMINIO	—
CCA048	B	80	89	ALUMINIO	—
CCA301	A	90	133	ALUMINIO	—
CCA004	A	100	133	ALUMINIO	—
CCA005	A	110	133	ALUMINIO	—
CCA006	—	150	160	ALUMINIO	—
CCA007	—	205	220	ALUMINIO	—
—	D	19	31	BRONCE	—
—	D	25	31	BRONCE	—
—	C	25	66	BRONCE	—
—	C	32	66	BRONCE	—
—	C	38	66	BRONCE	—
—	C	45	66	BRONCE	—
—	C	52	66	BRONCE	—
—	—	65	81	BRONCE	—
—	B	65	89	BRONCE	—
—	B	75	89	BRONCE	—
—	A	100	133	BRONCE	—
—	A	110	133	BRONCE	—
—	—	150	160	BRONCE	—
—	D	19	31	INOX-316	—
—	D	25	31	INOX-316	—
—	C	25	66	INOX-316	—
—	C	32	66	INOX-316	—
—	C	38	66	INOX-316	—
—	C	40	66	INOX-316	—
—	C	45	66	INOX-316	—
—	C	52	66	INOX-316	—



STORZ, Quick Couplings

Ref. Gassó	Tamaño Size (mm)	D Hose tail	KA Dist. garras	Material	Peso Weight (kg)
------------	------------------	-------------	-----------------	----------	------------------

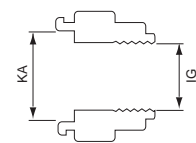
> ASPIRACIÓN PARA MANGUERAS | SUCTION HOSES

—	—	65	81	INOX-316	—
—	B	65	89	INOX-316	—
—	B	75	89	INOX-316	—
—	B	80	89	INOX-316	—
—	A	100	133	INOX-316	—
—	A	110	133	INOX-316	—
CCA006	—	150	160	INOX-316	—

Ref. Gassó	Tamaño Size (mm)	IG Thread	KA Dist. garras	Material	Peso Weight (Kg)
------------	------------------	-----------	-----------------	----------	------------------

ROSCA HEMBRA | FEMALE THREAD

CCA060	D	1/2"	31	ALUMINIO	—
CCA014	D	3/4"	31	ALUMINIO	—
CCA015	D	1"	31	ALUMINIO	—
CCA065	C	1 1/4"	66	ALUMINIO	—
CCA016	C	1 1/2"	66	ALUMINIO	—
CCA017	C	2"	66	ALUMINIO	—
CCA064	B	2"	89	ALUMINIO	—
CCA018	B	2 1/2"	89	ALUMINIO	—
CCA019	B	3"	89	ALUMINIO	—
CCA020	A	4"	133	ALUMINIO	—
CCA021	A	4 1/2"	133	ALUMINIO	—
CCA045	—	5"	148	ALUMINIO	—
CCA067	—	6"	160	ALUMINIO	—
CCA068	—	8"	220	ALUMINIO	—
—	D	1/2"	31	BRONCE	—
—	D	3/4"	31	BRONCE	—
CCA122	D	1"	31	BRONCE	—
—	C	1 1/4"	66	BRONCE	—
CCA123	C	1 1/2"	66	BRONCE	—
—	C	2"	66	BRONCE	—
—	B	2"	89	BRONCE	—
—	B	2 1/2"	89	BRONCE	—
—	B	3"	89	BRONCE	—
CCA120	A	4"	133	BRONCE	—
—	A	4 1/2"	133	BRONCE	—
—	—	5"	148	BRONCE	—
—	—	6"	160	BRONCE	—
—	D	1/2"	31	INOX-316	—
—	D	3/4"	31	INOX-316	—
—	D	1"	31	INOX-316	—
—	C	1 1/4"	66	INOX-316	—
—	C	1 1/2"	66	INOX-316	—
—	C	2"	66	INOX-316	—
—	B	2"	89	INOX-316	—
—	B	2 1/2"	89	INOX-316	—
CCA052	B	3"	89	INOX-316	—
CCA135	A	4"	133	INOX-316	—
—	A	4 1/2"	133	INOX-316	—
—	—	5"	148	INOX-316	—
—	—	6"	160	INOX-316	—



ROSCA MACHO | MALE THREAD

CCA059	D	3/4"	31	ALUMINIO	—
CCA022	D	1"	31	ALUMINIO	—
CCA023	C	1 1/2"	66	ALUMINIO	—
CCA024	C	2"	66	ALUMINIO	—
CCA092	C	2 1/2"	66	ALUMINIO	—
CCA025	B	2 1/2"	89	ALUMINIO	—
CCA026	B	3"	89	ALUMINIO	—
CCA027	A	4"	133	ALUMINIO	—
—	—	5"	148	ALUMINIO	—
—	—	6"	160	ALUMINIO	—

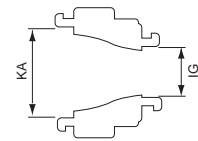
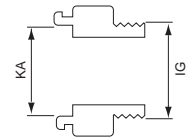


Norma Racores Storz según DIN PN16. Roscas según ISO 228.1
Norm Storz Couplings according DIN PN16. Thread according ISO 228.1

Ref. Gassó	Tamaño Size (mm)	IG Hose tail	KA Dist. garras	Material	Peso Weight Kg)
------------	------------------	--------------	-----------------	----------	-----------------

> ROSCA MACHO | MALE THREAD

CCA059	D	3/4"	31	BRONCE	—
—	D	1"	31	BRONCE	—
CCA0231	C	1 1/2"	66	BRONCE	—
—	C	2"	66	BRONCE	—
—	B	2 1/2"	66	BRONCE	—
CCA119	B	2 1/2"	89	BRONCE	—
—	B	3"	89	BRONCE	—
—	A	4"	133	BRONCE	—
CCA152	D	3/4"	31	INOX-316	—
—	D	1"	31	INOX-316	—
—	C	1 1/2"	66	INOX-316	—
CCA133	C	2"	66	INOX-316	—
—	B	2 1/2"	89	INOX-316	—
—	B	3"	89	INOX-316	—
—	A	4"	133	INOX-316	—



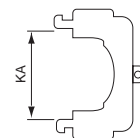
REDUCCION | REDUCING

CCA032	C/D	66/31	ALUMINIO	—
CCA033	B/C	89/66	ALUMINIO	—
—	A/C	133/66	ALUMINIO	—
CCA034	A/B	133/89	ALUMINIO	—
—	C/D	66/31	BRONCE	—
—	B/C	89/66	BRONCE	—
—	A/B	133/89	BRONCE	—
—	C/D	66/31	INOX-316	—
—	B/C	89/66	INOX-316	—
CCA134	A/B	133/89	INOX-316	—

Ref. Gassó	Tamaño Size	KA Dist. garra	Material	Peso Weight (kg)
------------	-------------	----------------	----------	------------------

TAPÓN | CAP

CCA028	D	31	ALUMINIO	—
CCA029	C	66	ALUMINIO	—
CCA030	B	89	ALUMINIO	—
CCA031	A	133	ALUMINIO	—
CCA050	—	160	ALUMINIO	—
CCA019	—	220	ALUMINIO	—
—	—	278	ALUMINIO	—
—	D	31	BRONCE	—
—	C	66	BRONCE	—
—	B	89	BRONCE	—
—	A	133	BRONCE	—
CCA050	—	160	BRONCE	—
—	D	31	INOX-316	—
—	C	66	INOX-316	—
—	B	89	INOX-316	—



JUNTAS | SEALS

CCA035	1/2" - 3/4" - 1"	D	NEOPRENO NEGRO*	—
CCA036	1 1/2" - 2"	C	NEOPRENO NEGRO*	—
CCA037	2 1/2" - 3"	B	NEOPRENO NEGRO*	—
CCA038	4"	A	NEOPRENO NEGRO*	—
CCA069	1/2" - 3/4" - 1"	D	NEOP. BLANCO ATOX.*	—
CCA070	1 1/2" - 2"	C	NEOP. BLANCO ATOX.*	—
CCA073	2 1/2" - 3"	B	NEOP. BLANCO ATOX.*	—
CCA079	4"	A	NEOP. BLANCO ATOX.*	—



* Negro: black. Blanco atox.: white food quality

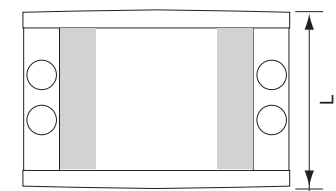
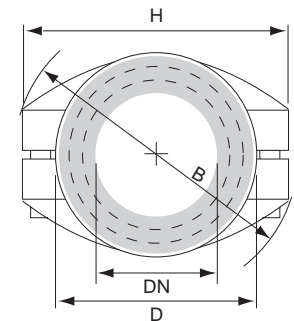
Safety Clamps DIN 2817

Norma Abrazaderas según DIN 912/934
Norm Clamps according DIN 912/934

Ref. Gassó	DN (mm)	D (min-max) (mm)	H (mm)	B (mm)	L (mm)	Tornillo Bolts (mm)	Material	Peso Weight (kg)
------------	---------	------------------	--------	--------	--------	---------------------	----------	------------------

TORNILLO | BOLT

EDA513	13x5	22-24	56	59	50	4xM6x20	ALUMINIO	0,11
EDA519	19x6	30-33	65	68	50	4xM6x20	ALUMINIO	0,13
EDA525	25x6	36-39	73	75	50	4xM6x20	ALUMINIO	0,14
EDA526	25x8	40-43	76	79	50	4xM6x20	ALUMINIO	0,14
EDA532	32x6	43-46	75	77	50	4xM6x20	ALUMINIO	0,15
EDA533	32x8	47-50	83	85	70	4xM6x20	ALUMINIO	0,15
EDA534	32x10	50-53	84	86	50	4xM6x20	ALUMINIO	0,17
EDA535	35x6	47-50	83	85	50	4xM6x20	ALUMINIO	0,15
EDA538	38x6,5	50-52	83	85	50	4xM6x20	ALUMINIO	0,16
EDA539	38x8	53-56	85	87	50	4xM6x20	ALUMINIO	0,18
EDA541	38x10	57-60	90	92	50	4xM6x20	ALUMINIO	0,18
EDA540	40x7	53-56	85	87	50	4xM6x20	ALUMINIO	0,18
EDA5401	40x10	58-61	92	94	50	4xM6x20	ALUMINIO	0,19
EDA545	45x7	58-61	98	101	57	4xM8x25	ALUMINIO	0,30
EDA550	50x8	64-67	103	106	57	4xM8x25	ALUMINIO	0,27
EDA552	50x10	69-71	107	110	57	4xM8x25	ALUMINIO	0,31
EDA565	65x7	78-82	118	121	75	4xM8x25	ALUMINIO	0,40
EDA563	65x10	84-87	124	126	75	4xM8x25	ALUMINIO	0,45
EDA575	75x8	89-93	131	133	77	4xM8x25	ALUMINIO	0,49
EDA576	75x10	94-97	138	140	77	4xM8x25	ALUMINIO	0,53
EDA577	75x12	98-101	141	142	77	4xM8x25	ALUMINIO	0,52
EDA580	80x8	94-97	138	140	77	4xM8x25	ALUMINIO	0,47
EDA590	80x10	99-102	141	142	77	4xM8x25	ALUMINIO	0,51
EDA591	80x12	102-105	141	142	108	6xM8x25	ALUMINIO	0,65
EDA600	100x8	114-119	164	167	120	4xM10x40	ALUMINIO	1,19
EDA601	100x10	118-122	167	169	120	4xM10x40	ALUMINIO	1,15
EDA602	100x12	122-126	174	176	120	4xM10x40	ALUMINIO	1,40
EDA603	100x14	126-130	180	182	120	4xM10x40	ALUMINIO	1,35
EDA604	100x16	130-134	185	187	120	4xM10x40	ALUMINIO	1,40
EDA6091	100x16	230-239	294	298	243	8xM12x60	ALUMINIO	6,75
EDA607	125x10	143-148	190	192	145	6xM10x40	ALUMINIO	1,40
EDA6071	125x13	149-154	211	214	145	6xM12x50	ALUMINIO	2,65
EDA6072	125x15	153-158	218	224	145	6xM12x50	ALUMINIO	2,85
EDA608	150x10	168-174	231	235	182	6xM12x50	ALUMINIO	3,75
EDA6081	150x13	174-180	233	237	182	6xM12x50	ALUMINIO	3,30
EDA6082	150x15	178-184	244	248	182	6xM12x50	ALUMINIO	3,70
EDA609	200x12	222-229	288	291	243	8xM12x60	ALUMINIO	6,50
EDA509	13x5	22-24	56	59	50	4xM6x20	INOX-316	0,25
EDA617	13x6	24-26	54	57	65	4xM6x20	INOX-316	0,32
EDA610	19x6	30-33	65	68	50	4xM6x20	INOX-316	0,31
EDA6101	19x7	32-34	70	73	65	4xM8x25	INOX-316	0,50
EDA611	25x6	36-39	73	75	50	4xM6x20	INOX-316	0,33
EDA6111	25x7,5	39-41	80	83	65	4xM8x25	INOX-316	0,63
EDA612	32x6	43-46	75	77	50	4xM6x20	INOX-316	0,35
EDA6181	32x8	47-50	88	90	77	4xM8x25	INOX-316	0,72
EDA613	38x6,5	50-52	83	85	50	4xM6x20	INOX-316	0,38
EDA6131	38x8	53-56	102	107	90	4xM10x40	INOX-316	1,30
EDA614	50x8	64-67	103	106	57	4xM8x25	INOX-316	0,65
EDA6141	50x9	67-69	113	117	100	4xM10x40	INOX-316	1,65
EDA615	63x8	78-82	118	121	75	4xM8x25	INOX-316	1,05
EDA616	75x8	89-93	131	133	77	4xM8x25	INOX-316	1,15
EDA6161	100x8	114-119	164	167	120	4xM10x40	INOX-316	3,00
—	10x8	34-36	70	73	65	4xM8x25	LATÓN	0,55
—	13x5	22-24	56	59	50	4xM6x20	LATÓN	0,27
—	13x5	22-24	54	57	65	4xM6x20	LATÓN	0,37
—	13x6	24-26	54	57	65	4xM6x20	LATÓN	0,34
—	13x7	26-28	54	57	65	4xM6x20	LATÓN	0,31
—	19x6	30-33	65	68	50	4xM6x20	LATÓN	0,31
—	19x6	30-33	67	70	65	4xM8x25	LATÓN	0,54

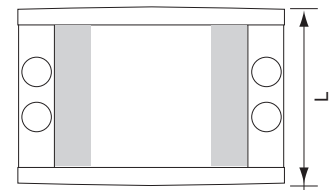
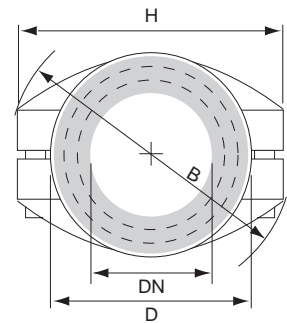


Norma Abrazaderas según DIN 912/934
Norm Clamps according DIN 912/934

Ref. Gassó	DN (mm)	D (min-max) (mm)	H (mm)	B (mm)	L (mm)	Tornillo Bolts (mm)	Material	Peso Weight (kg)
------------	---------	------------------	--------	--------	--------	---------------------	----------	------------------

> TORNILLO | BOLT

EDA619	19x7	32-34	70	73	65	4xM8x25	LATÓN	0,56
—	25x6	36-39	73	75	50	4xM6x20	LATÓN	0,33
—	25x6,5	37-39	76	79	65	4xM8x25	LATÓN	0,55
EDA620	25x7,5	39-41	80	83	65	4xM8x25	LATÓN	0,68
—	25x8	40-43	76	79	50	4xM6x20	LATÓN	0,38
—	25x8,5	41-43	80	83	65	4xM8x25	LATÓN	0,65
—	32x6	43-46	75	77	50	4xM6x20	LATÓN	0,41
—	32x6	43-46	86	89	77	4xM8x25	LATÓN	0,87
—	32x8	47-50	83	85	70	4xM6x20	LATÓN	0,41
—	32x8	47-50	88	90	77	4xM8x25	LATÓN	0,78
—	32x10	50-53	84	86	50	4xM6x20	LATÓN	0,49
—	32x10	50-53	95	97	77	4xM8x25	LATÓN	0,83
—	38x6,5	50-52	83	85	50	4xM6x20	LATÓN	0,43
—	38x8	53-56	85	87	50	4xM6x20	LATÓN	0,50
—	38x8	53-56	102	107	90	4xM10x40	LATÓN	1,40
—	38x10	57-60	90	92	50	4xM6x20	LATÓN	0,50
—	38x10	57-60	106	111	90	4xM10x40	LATÓN	1,55
—	40x7	53-56	85	87	50	4xM6x20	LATÓN	0,50
—	40x10	58-61	92	94	50	4xM6x20	LATÓN	0,52
EDA621	50x8	64-67	103	106	57	4xM8x25	LATÓN	0,71
EDA622	50x9	67-69	113	117	100	4xM10x40	LATÓN	1,70
EDA623	50x10	69-71	116	121	100	4xM10x40	LATÓN	1,75
EDA6240	50x12	73-76	128	132	100	4xM10x40	LATÓN	2,40
—	65x7	78-82	118	121	75	4xM8x25	LATÓN	1,20
—	65x10	84-87	124	126	75	4xM8x25	LATÓN	1,30
—	65x10	84-87	141	143	102	4xM10x40	LATÓN	2,90
—	65x12	88-91	141	143	102	4xM10x40	LATÓN	2,40
—	75x8	89-93	131	133	77	4xM8x25	LATÓN	1,25
—	75x10	94-97	138	140	77	4xM8x25	LATÓN	1,40
—	75x12	98-101	148	150	77	4xM8x25	LATÓN	1,85
—	75x12	98-101	148	150	115	4xM10x40	LATÓN	2,85
—	75x14	102-105	155	157	115	4xM10x40	LATÓN	3,90
—	80x8	94-97	138	140	77	4xM8x25	LATÓN	1,40
—	80x10	99-102	148	150	77	4xM8x25	LATÓN	1,80
—	100x8	114-119	164	167	120	4xM10x40	LATÓN	3,40
—	100x10	118-122	185	187	120	4xM10x40	LATÓN	5,60
—	100x12	122-126	185	187	120	4xM10x40	LATÓN	5,00
—	100x14	126-130	185	187	120	4xM10x40	LATÓN	4,80
—	100x16	130-134	185	187	120	4xM10x40	LATÓN	3,75
—	125x10	143-148	211	214	145	6xM12x50	LATÓN	8,20
—	125x13	149-154	211	214	145	6xM12x50	LATÓN	7,25
—	125x15	153-158	218	224	145	6xM12x50	LATÓN	8,10



Ref. Gassó	Tamaño Size	D (min-max) (mm)	Material	Peso Weight
------------	-------------	------------------	----------	-------------

KOMBIFIX CON PASADOR | PINED CLAMPS

EDA625	25x6	36-39	ALUMINIO	—
EDA632	32x6	43-46	ALUMINIO	—
EDA638	38x6	50-52	ALUMINIO	—
EDA640	40x7	53-56	ALUMINIO	—
EDA650	50x8	64-67	ALUMINIO	—
EDA665	65x7	78-82	ALUMINIO	—
EDA675	75x8	89-93	ALUMINIO	—
EDA700	100x8	114-119	ALUMINIO	—



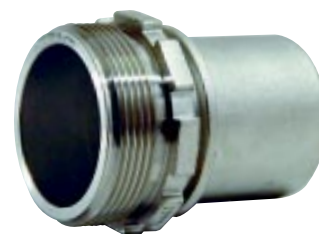
Safety Clamps Couplings

Norma Roscas BSP según ISO 228.1
Norm BSP threads according ISO 228.1

Ref. Gassó	P/M Tail hose	Rosca Thread (mm)	Material	Peso Weight (Kg)
------------	---------------	-------------------	----------	------------------

VSL RACORES MACHO PARA ABRAZ. DE SEGURIDAD | SAFETY CLAMPS MALE COUPLINGS

EDA300	13	1/2"	ACERO	—
EDA306	19	3/4"	ACERO	—
EDA314	25	1"	ACERO	—
EDA327	32	1 1/4"	ACERO	—
EDA337	38	1 1/2"	ACERO	—
EDA349	50	2"	ACERO	—
EDA355	60	2 1/2"	ACERO	—
EDA370	75	3"	ACERO	—
EDA382	100	4"	ACERO	—
EDA301	13	1/2"	INOX-316	—
EDA307	19	3/4"	INOX-316	—
EDA315	25	1"	INOX-316	—
EDA328	32	1 1/4"	INOX-316	—
EDA338	38	1 1/2"	INOX-316	—
EDA405	50	2"	INOX-316	—
EDA4051	65	2 1/2"	INOX-316	—
EDA371	75	3"	INOX-316	—
EDA406	80	3"	INOX-316	—
EDA407	100	4"	INOX-316	—
EDA302	13	1/2"	LATON	—
EDA319	19	3/4"	LATON	—
EDA325	25	1"	LATON	—
EDA326	32	1 1/4"	LATON	—
EDA336	38	1 1/2"	LATON	—
EDA350	50	2"	LATON	—
EDA3501	65	2 1/2"	LATON	—
EDA375	75	3"	LATON	—
EDA380	80	3"	LATON	—
EDA400	100	4"	LATON	—
EDA351	50	2"	ALUMINIO	—
EDA374	75	3"	ALUMINIO	—
EDA381	80	3"	ALUMINIO	—
EDA401	100	4"	ALUMINIO	—



MSL RACORES HEMBRA PARA ABRAZ. DE SEGURIDAD | SAFETY CLAMPS FEMALE COUPLINGS

EDA440	13	1/2"	ACERO	—
EDA442	19	3/4"	ACERO	—
EDA4461	25	1"	ACERO	—
EDA4481	32	1 1/4"	ACERO	—
EDA4491	38	1 1/2"	ACERO	—
EDA4501	50	2"	ACERO	—
EDA453	65	2 1/2"	ACERO	—
EDA4621	75	3"	ACERO	—
EDA4622	80	3"	ACERO	—
EDA463	100	4"	ACERO	—
—	50	2"	ACERO	—
EDA4401	13	1/2"	LATON	—
EDA4421	19	3/4"	LATON	—
EDA446	25	1"	LATON	—
EDA447	32	1 1/4"	LATON	—
EDA449	38	1 1/2"	LATON	—
EDA450	50	2"	LATON	—
EDA4502	65	2 1/2"	LATON	—
EDA451	75	3"	LATON	—
EDA4511	80	3"	LATON	—
EDA4631	100	4"	LATON	—
EDA4402	13	1/2"	INOX-316	—
EDA455	19	3/4"	INOX-316	—



STEAM Couplings

Norma Roscas BSP según ISO 228.1
Norm BSP threads according ISO 228.1

Ref. Gassó	P/M Tail hose	Rosca Thread (mm)	Material	Peso Weight (Kg)
------------	---------------	-------------------	----------	------------------

> MSL RACORES HEMBRA PARA ABRAZ. DE SEGURIDAD | SAFETY CLAMPS FEMALE COUPLINGS

EDA454	25	1"	INOX-316	—
EDA456	32	1 1/4"	INOX-316	—
EDA459	38	1 1/2"	INOX-316	—
EDA461	50	2"	INOX-316	—
EDA4503	65	2 1/2"	INOX-316	—
EDA462	75	3"	INOX-316	—
EDA4623	80	3"	INOX-316	—
EDA4632	100	4"	INOX-316	—
EDA498	75	3"	ALUMINIO	—
—	100	4"	ALUMINIO	—

VSS RACORES MACHO PARA VAPOR | STEAM MALE COUPLINGS

—	13	1/2"	ACERO	—
—	19	3/4"	ACERO	—
—	25	1"	ACERO	—
—	32	1 1/4"	ACERO	—
—	50	2"	ACERO	—
—	13	1/2"	LATON	—
—	19	3/4"	LATON	—
—	25	1"	LATON	—
—	32	1 1/4"	LATON	—
—	50	2"	LATON	—



MSS RACORES HEMBRA PARA VAPOR | STEAM FEMALE COUPLINGS

—	13	1/2"	ACERO	—
—	19	3/4"	ACERO	—
—	25	1"	ACERO	—
—	32	1 1/4"	ACERO	—
—	50	2"	ACERO	—
—	13	1/2"	LATON	—
—	19	3/4"	LATON	—
—	25	1"	LATON	—
—	32	1 1/4"	LATON	—
—	50	2"	LATON	—



STEAM Couplings

Temperatura Racores para vapor hasta 235°C
Temperature Steam couplings up to 235°C

Ref. Gassó	P/M Tail hose	Rosca Thread (mm)	Part. Nº.	Material	Peso Weight
------------	---------------	-------------------	-----------	----------	-------------

BOQUILLA PARA MANGUERA | BOSS STEM

XFA917	1/2"	—	GB1	ACERO	—
XFA918	3/4"	—	GB6	ACERO	—
XFA919	1"	—	GB11	ACERO	—
XFA920	1 1/4"	—	GB16	ACERO	—
XFA921	1 1/2"	—	GB21	ACERO	—
XFA922	2"	—	GB26	ACERO	—
—	1/2"	—	—	LATON	—
XFA924	3/4"	—	BGB6	LATON	—
XFA923	1"	—	BGB11	LATON	—
—	1 1/4"	—	BGB16	LATON	—
—	1 1/2"	—	BGB21	LATON	—
—	2"	—	BGB26	LATON	—



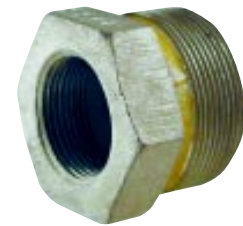
TUERCA | WING NUT THREAD

XFA927	1/2"	—	B2	ACERO	—
XFA928	3/4"	—	B12	ACERO	—
XFA929	1"	—	B12	ACERO	—
XFA930	1 1/4"	—	B17	ACERO	—
XFA931	1 1/2"	—	B17	ACERO	—
XFA932	2"	—	B27	ACERO	—
—	1/2"	—	—	LATON	—
—	3/4"	—	BB12	LATON	—
XFA933	1"	—	BB12	LATON	—
—	1 1/4"	—	BB17	LATON	—
—	1 1/2"	—	BB17	LATON	—
—	2"	—	BB27	LATON	—



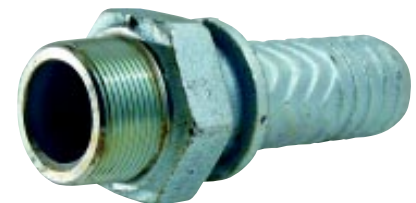
REDUCTOR | FEMALE SPUD X WING NUT THREAD

XFA937	1/2"	BSP/NPT	GB3	ACERO	—
XFA938	3/4"	BSP/NPT	GB8	ACERO	—
XFA939	1"	BSP/NPT	GB13	ACERO	—
XFA940	1 1/4"	BSP/NPT	GB18	ACERO	—
XFA941	1 1/2"	BSP/NPT	GB23	ACERO	—
XFA942	2"	BSP/NPT	GB28	ACERO	—
—	1/2"	BSP/NPT	—	LATON	—
XFA044	3/4"	BSP/NPT	BGB8	LATON	—
XFA944	1"	BSP/NPT	BGB13	LATON	—
—	1 1/4"	BSP/NPT	BGB18	LATON	—
—	1 1/2"	BSP/NPT	BGB23	LATON	—
—	2"	BSP/NPT	BGB28	LATON	—



MACHO PARA MANGUERA | MALE STEM

XFA945	1/2"	BSP/NPT	MS1	ACERO	—
XFA946	3/4"	BSP/NPT	MS6	ACERO	—
XFA947	1"	BSP/NPT	MS11	ACERO	—
XFA948	1 1/4"	BSP/NPT	MS16	ACERO	—
XFA941	1 1/2"	BSP/NPT	MS21	ACERO	—
XFA950	2"	BSP/NPT	MS26	ACERO	—
—	1/2"	BSP/NPT	—	LATON	—
—	3/4"	BSP/NPT	BMS6	LATON	—
—	1"	BSP/NPT	BMS11	LATON	—
—	1 1/4"	BSP/NPT	BMS16	LATON	—
—	1 1/2"	BSP/NPT	BMS21	LATON	—
—	2"	BSP/NPT	BMS26	LATON	—



Temperatura Racores para vapor hasta 235°C
Temperature Steam couplings up to 235°C

Ref. Gassó	P/M Tail hose	Manguera Hose	Part. N°.	Material	Peso Weight
MORDAZA 2 TORNILLOS 2 BOLT CLAMP					
XFA964	1/2"	20,5x24	DD	ACERO	—
XFA966	3/4"	33x38	B9	ACERO	—
—	1/2"	24x27	BB4	LATON	—
—	3/4"	30x33	BBU9	LATON	—



MORDAZA 4 TORNILLOS 4 BOLT CLAMP					
XFA971	1"	39x43,5	BU14	ACERO	—
XFA973	1 1/4"	45,5x53	BU19	ACERO	—
XFA976	1 1/2"	55,5x60	BU24	ACERO	—
XFA980	2"	70x78	BU29	ACERO	—
—	1"	39x43,5	BBU14	LATON	—
—	1 1/4"	54x60	BB19	LATON	—
—	1 1/2"	60x65	BB24	LATON	—
—	2"	63,5x71	BBU29	LATON	—



BARCELONA Couplings

Ref. Gassó	Diámetro Diameter	Material	Peso Weight (kg)
---------------	----------------------	----------	---------------------

RACOR PARA MANGUERA | COUPLING HOSE

XEA001	25	ALUMINIO FORJADO	—
XEA002	45	ALUMINIO FORJADO	—
XEA003	70	ALUMINIO FORJADO	—
XEA020	45	ALUMINIO FUNDIDO	—
XEA021	70	ALUMINIO FUNDIDO	—
XEA102	45	LATÓN	—
XEA109	70	LATÓN	—

Norma Racores según norma UNE 23400
Norm Couplings according UNE 23400



Ref. Gassó	Tamaño Size	Rosca Thread	Material	Peso Weight (Kg)
---------------	----------------	-----------------	----------	---------------------

FIJO ROSCA HEMBRA | LOCKED FEMALE THREAD

XEA004	25	1"	ALUMINIO FORJADO	—
XEA005	45	1 1/2"	ALUMINIO FORJADO	—
XEA006	70	2 1/2"	ALUMINIO FORJADO	—
XEA022	45	1 1/2"	ALUMINIO FUNDIDO	—
XEA023	70	2 1/2"	ALUMINIO FUNDIDO	—
XEA115	45	1 1/2"	LATÓN	—
XEA117	70	2 1/2"	LATÓN	—



FIJO ROSCA MACHO | LOCKED MALE THREAD

XEA007	25	1"	ALUMINIO FORJADO	—
XEA008	45	1 1/2"	ALUMINIO FORJADO	—
XEA009	70	2 1/2"	ALUMINIO FORJADO	—
XEA024	45	1 1/2"	ALUMINIO FUNDIDO	—
XEA025	70	2 1/2"	ALUMINIO FUNDIDO	—
XEA126	45	1 1/2"	LATÓN	—
XEA128	70	2 1/2"	LATÓN	—



Ref. Gassó	Diámetro Diameter	Material	Peso Weight (Kg)
---------------	----------------------	----------	---------------------

TAPONES | PLUGS

XEA014	25	ALUMINIO FORJADO	—
XEA012	45	ALUMINIO FORJADO	—
XEA013	70	ALUMINIO FORJADO	—
XEA027	45	ALUMINIO FUNDIDO	—
XEA028	70	ALUMINIO FUNDIDO	—
XEA137	45	LATÓN	—
XEA140	70	LATÓN	—



REDUCCIONES | REDUCTIONS

XEA010	45/25	ALUMINIO FORJADO	—
XEA011	70/45	ALUMINIO FORJADO	—
XEA026	70/45	ALUMINIO FUNDIDO	—
XEA143	70/45	LATÓN	—



JUNTA ACOPLE | COUPLING SEAL

XEA091	25	NBR	—
XEA095	45	NBR	—
XEA098	70	NBR	—



Nota: consúltennos para otros diámetros y tipos de rosca no especificados en estas tablas | Other diameters and thread types under demand.

COMPRESSED AIR Couplings

Ref. Gassó	Diámetro Diameter	Material	Peso Weight (Kg)
------------	-------------------	----------	------------------

EXPRESS PARA MANGUERA | HALF COUPLER WITH GROOVED HOSE SHANK

FAH000	16	LATÓN	-
FAH001	19	LATÓN	-
FAH002	25	LATÓN	-
FAH040	16	ACERO	-
FAH042	19	ACERO	-
FAH043	25	ACERO	-
FAH011	19	INOX-316	-
FAH012	25	INOX-316	-

EXPRESS FIJO ROSCA MACHO | HALF COUPLER WITH MALE BSP THREAD

FAH003	1/2"	LATÓN	-
FAH006	3/4"	LATÓN	-
FAH007	1"	LATÓN	-
FAH049	1/2"	ACERO	-
FAH050	3/4"	ACERO	-
FAH051	1"	ACERO	-
FAH0161	1/2"	INOX-316	-
FAH016	3/4"	INOX-316	-
FAH017	1"	INOX-316	-

EXPRESS FIJO ROSCA HEMBRA | HALF COUPLER WITH FEMALE BSP THREAD

FAH009	1/2"	LATÓN	-
FAH004	3/4"	LATÓN	-
FAH005	1"	LATÓN	-
FAH045	1/2"	ACERO	-
FAH046	3/4"	ACERO	-
FAH047	1"	ACERO	-
FAH013	1/2"	INOX-316	-
FAH014	3/4"	INOX-316	-
FAH015	1"	INOX-316	-

EXPRESS TAPONES | PLUGS

FAH008	1/2" - 3/4" - 1"	LATÓN	-
FAH018	1/2" - 3/4" - 1"	INOX-116	-

EXPRESS JUNTA | SEAL

OQH009	1/2" - 3/4" - 1"	NEOPRENO	-
--------	------------------	----------	---

Ref. Gassó	Diámetro Diameter	Material	Peso Weight (Kg)
------------	-------------------	----------	------------------

COMPRESOR ENCHUFE CON TUERCA | COMPRESSED AIR FEMALE HOSE SHANK

XRA100	19-3/4"	LATÓN	-
XRA101	25-1"	LATÓN	-

COMPRESOR MANGUITO MACHO | COMPRESSED AIR NIPLE MALE

-	1/2"x1/2"	LATÓN	-
XRA105	3/4"x3/4"	LATÓN	-
XRA106	1"x1"	LATÓN	-

COMPRESOR MANGUITO REDUCCIÓN | COMPRESSED AIR REDUCER NIPLE MALE

-	3/4"x1/2"	LATÓN	-
XRA107	1"x3/4"	LATÓN	-

COMPRESOR TUERCA MACHO | COMPRESSED AIR REDUCER NIPLE MALE-FEMALE

-	1/2"x1/2"	LATÓN	-
-	3/4"x3/4"	LATÓN	-
-	3/4"x1"	LATÓN	-
-	1"x1"	LATÓN	-

Norma Racores Express según NF E 29573. Rosca BSP según E 03005 | **Norm** Express couplings according NF E 29573. BSP Thread according E 03005



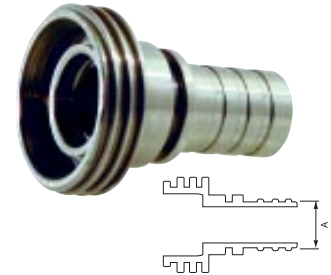
SANITARY / FOOD FITTINGS DIN 11859

Norma Racores alimentación según DIN 11859
Norm Sanitary couplings according DIN 11859

Ref. Gassó	NW Size	A (mm)	Material	Peso Weight (kg)
------------	---------	--------	----------	------------------

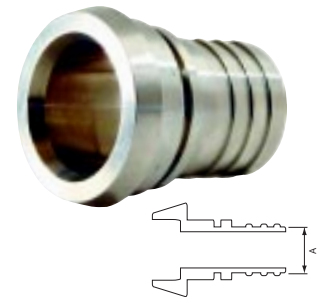
RACOR MACHO NW | NW MALE COUPLING

—	15	16	INOX-316	—
—	20	20	INOX-316	—
DIN101	25	25	INOX-316	—
—	32	32	INOX-316	—
DIN102	38	38	INOX-316	—
DIN103	50	50	INOX-316	—
DIN104	65	65	INOX-316	—
DIN105	80	80	INOX-316	—
—	100	100	INOX-316	—



RACOR HEMBRA NW | NW FEMALE COUPLING

—	15	16	INOX-316	—
DIN009	20	20	INOX-316	—
DIN001	25	25	INOX-316	—
DIN008	32	32	INOX-316	—
DIN002	40	38	INOX-316	—
DIN003	50	50	INOX-316	—
DIN004	65	65	INOX-316	—
DIN005	80	75	INOX-316	—
DIN007	100	100	INOX-316	—



TUERCA NW | NW THREAD

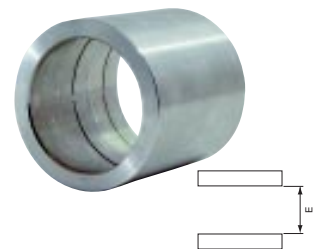
—	10	—	INOX-304	—
DIN199	15	—	INOX-304	—
DIN200	20	—	INOX-304	—
DIN201	25	—	INOX-304	—
DIN207	32	—	INOX-304	—
DIN202	40	—	INOX-304	—
DIN203	50	—	INOX-304	—
DIN204	65	—	INOX-304	—
—	75	—	INOX-304	—
DIN208	80	—	INOX-304	—
DIN205	100	—	INOX-304	—



Ref. Gassó	NW (mm)	E (mm)	Material	Peso Weight (Kg)
------------	---------	--------	----------	------------------

CASQUILLO | FERRULE

XFA597	1/2"	23	INOX-304	—
XFA598	3/4"	30	INOX-304	—
MIC203	3/4"	31	INOX-304	—
XFA5982	1"	37,2	INOX-304	—
MIC204	1"	39	INOX-304	—
MIC206	1 1/4"	46	INOX-304	—
XFA5985	1 1/4"	47,6	INOX-304	—
XFA5088	1 1/2"	50	INOX-304	—
MIC205	1 1/2"	58	INOX-304	—
XFA5089	2"	62	INOX-304	—
MIC201	2"	70	INOX-304	—
MIC202	2 1/2"	89	INOX-304	—
DIN220	3"	89	INOX-304	—
DIN221	3"	102	INOX-304	—
—	4"	130	INOX-304	—



Ref. Gassó	NW Size	A (mm)	B (mm)	C (mm)	D (mm)	Material	Peso Weight (kg)
------------	---------	--------	--------	--------	--------	----------	------------------

JUNTAS VITON | VITON SEALS

—	15	4,5	18	26	—	VITON	—
DIN423	20	4,5	23	33	—	VITON	—
DIN424	25	5	30	40	—	VITON	—
DIN425	32	5	36	46	—	VITON	—
DIN426	40	5	42	52	—	VITON	—
DIN427	50	5	54	64	—	VITON	—
DIN428	65	5	71	81	—	VITON	—
—	75	5	78	88	—	VITON	—
DIN429	80	5	85	95	—	VITON	—
DIN430	100	6	104	114	—	VITON	—



JUNTAS EPDM | EPDM SEALS

DIN433	15	4,5	18	26	—	EPDM	—
—	20	4,5	23	33	—	EPDM	—
DIN434	25	5	30	40	—	EPDM	—
—	32	5	36	46	—	EPDM	—
DIN436	40	5	42	52	—	EPDM	—
DIN437	50	5	54	64	—	EPDM	—
DIN438	65	5	71	81	—	EPDM	—
DIN439	80	5	85	95	—	EPDM	—
DIN440	100	6	104	114	—	EPDM	—



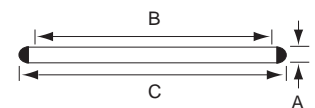
JUNTAS SILICONA | SILICONE SEALS

DIN413	15	4,5	18	26	—	SILICONA	—
—	20	4,5	23	33	—	SILICONA	—
DIN414	25	5	30	40	—	SILICONA	—
—	32	5	36	46	—	SILICONA	—
—	40	5	42	52	—	SILICONA	—
DIN417	50	5	54	64	—	SILICONA	—
DIN418	65	5	71	81	—	SILICONA	—
DIN419	80	5	85	95	—	SILICONA	—
DIN420	100	6	104	114	—	SILICONA	—



JUNTAS TEFLON | TEFLON SEALS

DIN393	15	4,5	18	26	—	TEFLON	—
DIN394	20	4,5	23	33	—	TEFLON	—
—	25	5	30	40	—	TEFLON	—
—	32	5	36	46	—	TEFLON	—
—	40	5	42	52	—	TEFLON	—
DIN397	50	5	54	64	—	TEFLON	—
—	65	5	71	81	—	TEFLON	—
—	80	5	85	95	—	TEFLON	—
—	100	6	104	114	—	TEFLON	—

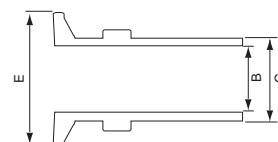


SANITARY / FOOD FITTINGS DIN 11859

Ref. Gassó	NW (mm)	E (mm)	B Pins	C (mm)	Material	Peso Weight (Kg)
------------	---------	--------	--------	--------	----------	------------------

CLAMP PARA MANGUERA | CLAMP HOSE FITTING

DIN6001	1/2"	25,3	9,7	12	INOX-316	—
DIN601	3/4"	25,3	16	19	INOX-316	—
DIN602	1"	50,5	22,9	25	INOX-316	—
DIN604	1 1/2"	50,5	35,1	38	INOX-316	—
DIN605	2"	64,0	47,8	50	INOX-316	—
DIN606	2 1/2"	77,5	60,5	63	INOX-316	—
DIN607	3"	91	72,1	75	INOX-316	—
DIN608	4"	119	97,6	100	INOX-316	—



CLAMP ABRAZADERA | CLAMP HINGED

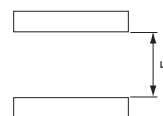
DIN550	1/2"- 3/4"	—	—	INOX-304	—
DIN559	1"- 1 1/2"	—	—	INOX-304	—
DIN552	2"	—	—	INOX-304	—
DIN553	2 1/2"	—	—	INOX-304	—
DIN555	3"	—	—	INOX-304	—
DIN556	4"	—	—	INOX-304	—



Ref. Gassó	NW (mm)	E (mm)	Material	Peso Weight (Kg)
------------	---------	--------	----------	------------------

CASQUILLO | FERRULE

XFA597	1/2"	23	INOX-304	—
XFA598	3/4"	30	INOX-304	—
MIC203	3/4"	31	INOX-304	—
XFA5982	1"	37,2	INOX-304	—
MIC204	1"	39	INOX-304	—
MIC206	1 1/4"	46	INOX-304	—
XFA5985	1 1/4"	47,6	INOX-304	—
XFA5088	1 1/2"	50	INOX-304	—
MIC205	1 1/2"	58	INOX-304	—
XFA5089	2"	62	INOX-304	—
MIC201	2"	70	INOX-304	—
MIC202	2 1/2"	89	INOX-304	—
DIN220	3"	89	INOX-304	—
DIN221	3"	102	INOX-304	—
—	4"	130	INOX-304	—



Ref. Gassó	NW (mm)	A (mm)	B Pins	Material	Peso Weight (g)
------------	---------	--------	--------	----------	-----------------

JUNTAS SILICONA | SILICONE SEALS

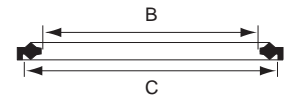
DIN610	1/2 - 3/4"	22	10/16	SILICONA	—
DIN612	1"	50,5	23,1	SILICONA	—
DIN613	1 1/2"	50,5	35,3	SILICONA	—
DIN614	2"	64	48	SILICONA	—
DIN615	2 1/2"	77,5	60,7	SILICONA	—
DIN616	3"	91	72,3	SILICONA	—
DIN618	4"	119	97,8	SILICONA	—

JUNTAS EPDM | EPDM SEALS

DIN640	1/2 - 3/4"	22	10/16	EPDM	—
DIN642	1"	50,5	23,1	EPDM	—
DIN644	2"	64	48	EPDM	—
—	2 1/2"	77,5	60,7	EPDM	—
DIN645	3"	91	72,3	EPDM	—
DIN647	4"	119	97,8	EPDM	—

JUNTAS TEFLÓN | TEFLON SEALS

DIN651	1/2 - 3/4"	22	10/16	TEFLON	—
DIN652	1"	50,5	23,1	TEFLON	—
DIN653	1 1/2"	50,5	35,3	TEFLON	—
DIN652	2"	64	48	TEFLON	—
DIN652	2 1/2"	77,5	60,7	TEFLON	—
DIN656	3"	91	72,3	TEFLON	—



DIN FLANGES

Ref. Gassó	DN	d1	D	b	k	N	Rosca	d2	Material	Peso Weight (Kg)
------------	----	----	---	---	---	---	-------	----	----------	------------------

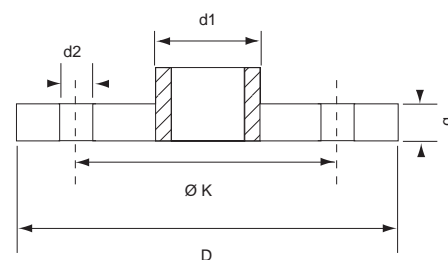
PLANA PARA SOLDAR INOX-316 DIN 2576 PN10/16

—	10	17,2	90	14	60	4	M12	14	INOX-316	0,60
XRC015	15	21,3	95	14	65	4	M12	14	INOX-316	0,66
XRC016	20	26,9	105	16	75	4	M12	14	INOX-316	0,93
XRC017	25	33,7	115	16	85	4	M12	14	INOX-316	1,14
XRC018	32	42,4	140	16	100	4	M16	18	INOX-316	1,66
XRC019	40	48,3	150	16	110	4	M16	18	INOX-316	1,89
XRC020	50	60,3	165	18	125	4	M16	18	INOX-316	2,51
XRC021	65	76,1	185	18	145	4	M16	18	INOX-316	3,00
XRC022	80	88,9	200	20	160	8	M16	18	INOX-316	3,79
XRC023	100	114,3	220	20	180	8	M16	18	INOX-316	4,20
XRC024	125	139,7	250	22	210	8	M16	18	INOX-316	5,46
XRC025	150	168,3	285	22	240	8	M20	22	INOX-316	6,57



PLANA PARA SOLDAR ACERO DIN 2576 PN10/16

—	10	17,2	90	14	60	4	M12	14	ACERO	0,60
XRC001	15	21,3	95	14	65	4	M12	14	ACERO	0,66
XRC002	20	26,9	105	16	75	4	M12	14	ACERO	0,93
XRC003	25	33,7	115	16	85	4	M12	14	ACERO	1,14
XRC004	32	42,4	140	16	100	4	M16	18	ACERO	1,66
XRC005	40	48,3	150	16	110	4	M16	18	ACERO	1,89
XRC006	50	60,3	165	18	125	4	M16	18	ACERO	2,51
XRC007	65	76,1	185	18	145	4	M16	18	ACERO	3,00
XRC008	80	88,9	200	20	160	8	M16	18	ACERO	3,79
XRC009	100	114,3	220	20	180	8	M16	18	ACERO	4,20
XRC010	125	139,7	250	22	210	8	M16	18	ACERO	5,46
XRC011	150	168,3	285	22	240	8	M20	22	ACERO	6,57



PLANA PARA SOLDAR ACERO CADMIADA DIN 2642

—	10	17,2	90	14	60	4	M12	14	AC.CADM.	0,60
XRB925	15	21,3	95	14	65	4	M12	14	AC.CADM.	0,66
XRB926	20	26,9	105	16	75	4	M12	14	AC.CADM.	0,81
XRB927	25	33,7	115	16	85	4	M12	14	AC.CADM.	1,11
XRB928	32	42,4	140	16	100	4	M16	18	AC.CADM.	1,64
XRB929	40	48,3	150	16	110	4	M16	18	AC.CADM.	1,86
XRB930	50	60,3	165	18	125	4	M16	18	AC.CADM.	2,20
XRB931	65	76,1	185	18	145	4	M16	18	AC.CADM.	2,62
XRB932	80	88,9	200	20	160	8	M16	18	AC.CADM.	3,32
XRB933	100	114,3	220	20	180	8	M16	18	AC.CADM.	3,67
XRB934	125	139,7	250	22	210	8	M16	18	AC.CADM.	5,46
XRC011	150	168,3	285	22	240	8	M20	22	AC.CADM.	6,57

N Número de taladros | Quantity of holes

Ref. Gassó	DN	d1	D	b	k	h1	d3	s	r	h2	d4	f	N	Rosca Thread	d2	Materia	Peso Weight
------------	----	----	---	---	---	----	----	---	---	----	----	---	---	--------------	----	---------	-------------

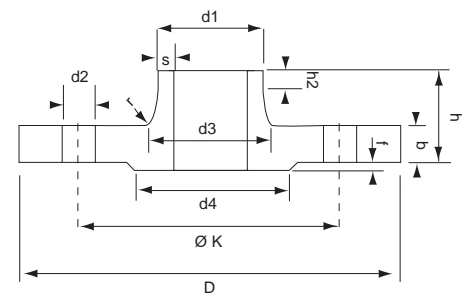
CON CUELLO PARA SOLDAR INOX-316 DIN 2633 PN16

—	10	17,2	90	14	60	35	28	1,8	4	6	40	2	4	M12	14	INOX-316	0,58
XRC030	15	21,3	95	14	65	35	32	2	4	6	45	2	4	M12	14	INOX-316	0,64
XRC031	20	26,9	105	16	75	38	40	2,3	4	6	58	2	4	M12	14	INOX-316	0,95
XRC032	25	33,7	115	16	85	38	45	2,6	4	6	68	2	4	M12	14	INOX-316	1,14
XRC033	32	42,4	140	16	100	40	56	2,6	6	6	78	2	4	M16	18	INOX-316	1,69
XRC034	40	48,3	150	16	110	42	64	2,6	6	7	88	3	4	M16	18	INOX-316	1,86
XRC035	50	60,3	165	18	125	45	75	2,9	6	8	102	3	4	M16	18	INOX-316	2,53
XRC036	65	76,1	185	18	145	45	90	2,9	6	10	122	3	4	M16	18	INOX-316	3,06
XRC037	80	88,9	200	20	160	50	105	3,2	8	10	138	3	8	M16	18	INOX-316	3,70
XRC038	100	114,3	220	20	180	52	131	3,6	8	—	158	3	8	M16	18	INOX-316	4,62
XRC027	125	139,7	250	22	210	55	156	4,0	8	12	188	3	8	M16	18	INOX-316	6,30
XRC028	150	168	285	22	240	55	184	4,5	10	12	212	3	8	M20	22	INOX-316	7,75



CON CUELLO PARA SOLDAR ACERO DIN 2633 PN16

—	10	17,2	90	14	60	35	28	1,8	4	6	40	2	4	M12	14	ACERO	0,58
XRE085	15	21,3	95	14	65	35	32	2	4	6	45	2	4	M12	14	ACERO	0,64
XRE086	20	26,9	105	16	75	38	40	2,3	4	6	58	2	4	M12	14	ACERO	0,95
XRE087	25	33,7	115	16	85	38	45	2,6	4	6	68	2	4	M12	14	ACERO	1,14
XRE088	32	42,4	140	16	100	40	56	2,6	6	6	78	2	4	M16	18	ACERO	1,69
XRE089	40	48,3	150	16	110	42	64	2,6	6	7	88	3	4	M16	18	ACERO	1,86
XRE090	50	60,3	165	18	125	45	75	2,9	6	8	102	3	4	M16	18	ACERO	2,53
XRE091	65	76,1	185	18	145	45	90	2,9	6	10	122	3	4	M16	18	ACERO	3,06
XRE092	80	88,9	200	20	160	50	105	3,2	8	10	138	3	8	M16	18	ACERO	3,70
XRE093	100	114,3	220	20	180	52	131	3,6	8	—	158	3	8	M16	18	ACERO	4,62
—	125	139,7	250	22	210	55	156	4,0	8	12	188	3	8	M16	18	ACERO	6,30
XRE094	150	168	285	22	240	55	184	4,5	10	12	212	3	8	M20	22	INOX-316	7,75



N Número de taladros | Quantity of holes

ANSI B 16.5

Ref. Gassó	DN	D	B	a	d3	h3	K	N	d2	Material	Peso Weight (Kg)
------------	----	---	---	---	----	----	---	---	----	----------	------------------

ASA 150 WELDING-NECK ACERO

XRE020	1/2"	88,9	11,1	21,3	30,2	47,6	60,3	4	16	ACERO	0,50
XRE021	3/4"	98,4	12,7	26,7	38,1	52,4	69,8	4	16	ACERO	0,70
XRE022	1"	107,9	14,3	33,5	49,2	55,6	79,4	4	17	ACERO	1,10
—	1 1/4"	117,5	15,9	42,2	58,7	57,1	88,9	4	17	ACERO	1,50
XRE023	1 1/2"	127,0	17,5	48,3	65,1	61,9	98,4	4	17	ACERO	1,80
XRE024	2"	152,4	19,1	60,4	77,8	63,5	120,6	4	19	ACERO	2,70
XRE025	2 1/2"	177,8	22,2	73,1	90,5	69,8	139,7	4	19	ACERO	4,40
XRE026	3"	190,5	23,8	88,9	107,9	69,8	152,4	4	19	ACERO	5,20
—	3 1/2"	215,9	23,8	101,6	122,2	71,4	177,8	8	19	ACERO	6,40
XRE027	4"	228,6	23,8	114,3	134,9	76,2	190,5	8	19	ACERO	7,50
XRE028	5"	254,0	23,8	141,2	163,5	88,9	215,9	8	23	ACERO	9,80
XRE029	6"	279,4	25,4	168,4	192,1	88,9	241,3	8	23	ACERO	11,0

ASA 150 WELDING-NECK INOX-316

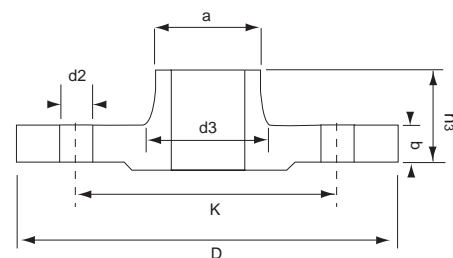
—	1/2"	88,9	11,1	21,3	30,2	47,6	60,3	4	16	INOX-316	0,50
—	3/4"	98,4	12,7	26,7	38,1	52,4	69,8	4	16	INOX-316	0,70
—	1"	107,9	14,3	33,5	49,2	55,6	79,4	4	17	INOX-316	1,10
—	1 1/4"	117,5	15,9	42,2	58,7	57,1	88,9	4	17	INOX-316	1,50
—	1 1/2"	127,0	17,5	48,3	65,1	61,9	98,4	4	17	INOX-316	1,80
—	2"	152,4	19,1	60,4	77,8	63,5	120,6	4	19	INOX-316	2,70
—	2 1/2"	177,8	22,2	73,1	90,5	69,8	139,7	4	19	INOX-316	4,40
—	3"	190,5	23,8	88,9	107,9	69,8	152,4	4	19	INOX-316	5,20
—	3 1/2"	215,9	23,8	101,6	122,2	71,4	177,8	8	19	INOX-316	6,40
—	4"	228,6	23,8	114,3	134,9	76,2	190,5	8	19	INOX-316	7,50
—	5"	254,0	23,8	141,2	163,5	88,9	215,9	8	23	INOX-316	9,80
—	6"	279,4	25,4	168,4	192,1	88,9	241,3	8	23	INOX-316	11,0

ASA 300 WELDING-NECK ACERO

XRE045	1/2"	95,2	14,3	21,3	38,1	52,4	66,7	4	16	ACERO	0,80
XRE046	3/4"	117,5	15,9	26,7	47,6	57,1	82,5	4	19	ACERO	1,30
XRE047	1"	123,8	17,5	33,5	54,0	61,9	88,9	4	19	ACERO	1,70
XRE048	1 1/4"	133,3	19,0	42,2	63,5	65,1	98,4	4	19	ACERO	2,20
XRE049	1 1/2"	155,6	20,6	48,3	69,8	68,3	114,3	4	23	ACERO	3,20
XRE050	2"	165,1	22,2	60,4	84,1	69,8	127,0	8	19	ACERO	3,60
XRE051	2 1/2"	190,5	25,4	73,1	100,0	76,2	149,2	8	23	ACERO	5,40
XRE052	3"	209,5	28,6	88,9	117,5	79,4	168,3	8	23	ACERO	7,40
—	3 1/2"	228,6	30,2	101,6	133,3	81,0	184,1	8	23	ACERO	8,90
XRE053	4"	254,0	31,8	114,3	146,0	85,7	200,0	8	23	ACERO	11,9
—	5"	279,4	34,9	141,2	177,8	98,4	234,9	8	23	ACERO	16,0
XRE055	6"	317,5	36,5	168,4	206,4	98,4	269,9	12	23	ACERO	20,2

ASA 300 WELDING-NECK INOX-316

—	1/2"	95,2	14,3	21,3	38,1	52,4	66,7	4	16	INOX-316	0,80
—	3/4"	117,5	15,9	26,7	47,6	57,1	82,5	4	19	INOX-316	1,30
—	1"	123,8	17,5	33,5	54,0	61,9	88,9	4	19	INOX-316	1,70
—	1 1/4"	133,3	19,0	42,2	63,5	65,1	98,4	4	19	INOX-316	2,20
—	1 1/2"	155,6	20,6	48,3	69,8	68,3	114,3	4	23	INOX-316	3,20
—	2"	165,1	22,2	60,4	84,1	69,8	127,0	8	19	INOX-316	3,60
—	2 1/2"	190,5	25,4	73,1	100,0	76,2	149,2	8	23	INOX-316	5,40
—	3"	209,5	28,6	88,9	117,5	79,4	168,3	8	23	INOX-316	7,40
—	3 1/2"	228,6	30,2	101,6	133,3	81,0	184,1	8	23	INOX-316	8,90
—	4"	254,0	31,8	114,3	146,0	85,7	200,0	8	23	INOX-316	11,9
—	5"	279,4	34,9	141,2	177,8	98,4	234,9	8	23	INOX-316	16,0
—	6"	317,5	36,5	168,4	206,4	98,4	269,9	12	23	INOX-316	20,2



Ref. Gassó	DN	D	b	h2	r	j2	K	d2	N	Material	Peso Weight (Kg)
------------	----	---	---	----	---	----	---	----	---	----------	------------------

ASA 150 LAP-JOINT

XRE105	1/2"	88,9	11,1	15,9	3,20	22,9	60,3	16	4	ACERO	0,40
XRE106	3/4"	98,4	12,7	15,9	3,20	28,2	69,8	16	4	ACERO	0,70
XRE107	1"	107,9	14,3	17,5	3,20	35,0	79,4	17	4	ACERO	0,80
XRE108	1 1/4"	117,5	15,9	20,6	4,80	43,7	88,9	17	4	ACERO	1,10
XRE109	1 1/2"	127,0	17,5	22,2	6,35	50,0	98,4	17	4	ACERO	1,40
XRE110	2"	152,4	19,1	25,4	7,90	62,5	120,6	19	4	ACERO	2,20
XRE111	2 1/2"	177,8	22,2	28,6	7,90	75,4	139,7	19	4	ACERO	3,60
XRE112	3"	190,5	23,8	30,2	9,50	91,4	152,4	19	4	ACERO	4,10
—	3 1/2"	215,9	23,8	31,7	9,50	104,1	177,8	19	8	ACERO	5,20
XRE113	4"	228,6	23,8	33,3	11,1	166,8	190,5	19	8	ACERO	5,60
XRE114	5"	254,0	23,8	36,5	11,1	144,5	215,9	23	8	ACERO	6,30
XRE115	6"	279,4	25,4	39,7	12,7	171,4	241,3	23	8	ACERO	7,50

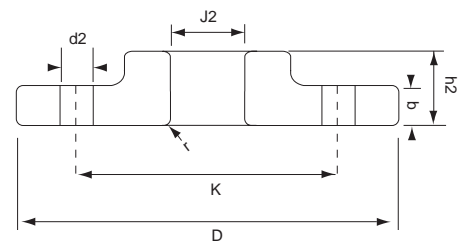
ASA 150 LAP-JOINT INOX-316

—	1/2"	88,9	11,1	15,9	3,20	22,9	60,3	16	4	INOX-316	0,40
—	3/4"	98,4	12,7	15,9	3,20	28,2	69,8	16	4	INOX-316	0,70
—	1"	107,9	14,3	17,5	3,20	35,0	79,4	17	4	INOX-316	0,80
—	1 1/4"	117,5	15,9	20,6	4,80	43,7	88,9	17	4	INOX-316	1,10
—	1 1/2"	127,0	17,5	22,2	6,35	50,0	98,4	17	4	INOX-316	1,40
—	2"	152,4	19,1	25,4	7,90	62,5	120,6	19	4	INOX-316	2,20
—	2 1/2"	177,8	22,2	28,6	7,90	75,4	139,7	19	4	INOX-316	3,60
—	3"	190,5	23,8	30,2	9,50	91,4	152,4	19	4	INOX-316	4,10
—	3 1/2"	215,9	23,8	31,7	9,50	104,1	177,8	19	8	INOX-316	5,20
—	4"	228,6	23,8	33,3	11,1	166,8	190,5	19	8	INOX-316	5,60
—	5"	254,0	23,8	36,5	11,1	144,5	215,9	23	8	INOX-316	6,30
—	6"	279,4	25,4	39,7	12,7	171,4	241,3	23	8	INOX-316	7,50



ASA 300 LAP-JOINT ACERO

—	1/2"	95,2	14,3	22,2	3,20	22,9	66,7	16	4	ACERO	0,70
—	3/4"	117,5	15,9	25,4	3,20	28,2	82,5	19	4	ACERO	1,10
—	1"	123,8	17,5	27,0	3,20	35,0	88,9	19	4	ACERO	1,40
—	1 1/4"	133,3	19,0	27,0	4,80	43,7	98,4	19	4	ACERO	1,80
—	1 1/2"	155,6	20,6	30,2	6,35	50,0	114,3	23	4	ACERO	2,60
—	2"	165,1	22,2	33,3	7,90	62,5	127,0	19	8	ACERO	3,40
—	2 1/2"	190,5	25,4	38,1	7,90	75,4	149,2	23	8	ACERO	4,40
—	3"	209,5	28,6	42,9	9,50	91,4	168,3	23	8	ACERO	6,10
—	3 1/2"	228,6	30,2	44,4	9,50	104,1	184,1	23	8	ACERO	7,50
—	4"	254,0	31,8	47,6	11,1	166,8	200,0	23	8	ACERO	10,1
—	5"	279,4	34,9	50,8	11,1	144,5	234,9	23	8	ACERO	12,5
—	6"	317,5	36,5	52,4	12,7	171,4	269,9	23	12	ACERO	14,1



ASA 300 LAP-JOINT INOX-316

—	1/2"	95,2	14,3	22,2	3,20	22,9	66,7	16	4	INOX-316	0,70
—	3/4"	117,5	15,9	25,4	3,20	28,2	82,5	19	4	INOX-316	1,10
—	1"	123,8	17,5	27,0	3,20	35,0	88,9	19	4	INOX-316	1,40
—	1 1/4"	133,3	19,0	27,0	4,80	43,7	98,4	19	4	INOX-316	1,80
—	1 1/2"	155,6	20,6	30,2	6,35	50,0	114,3	23	4	INOX-316	2,60
—	2"	165,1	22,2	33,3	7,90	62,5	127,0	19	8	INOX-316	3,40
—	2 1/2"	190,5	25,4	38,1	7,90	75,4	149,2	23	8	INOX-316	4,40
—	3"	209,5	28,6	42,9	9,50	91,4	168,3	23	8	INOX-316	6,10
—	3 1/2"	228,6	30,2	44,4	9,50	104,1	184,1	23	8	INOX-316	7,50
—	4"	254,0	31,8	47,6	11,1	166,8	200,0	23	8	INOX-316	10,1
—	5"	279,4	34,9	50,8	11,1	144,5	234,9	23	8	INOX-316	12,5
—	6"	317,5	36,5	52,4	12,7	171,4	269,9	23	12	INOX-316	14,1

ANSI B 16.5

Ref. Gassó	DN	D	b	h1	R	J1	K	N	d2	Material	Peso Weight (Kg)
------------	----	---	---	----	---	----	---	---	----	----------	------------------

ASA 150 SLIP-ON ACERO

XRE001	1/2"	88,9	11,1	15,9	34,9	22,3	60,3	4	16	ACERO	0,40
XRE002	3/4"	98,4	12,7	15,9	42,9	27,7	69,8	4	16	ACERO	0,70
XRE003	1"	107,9	14,3	17,5	50,8	34,5	79,4	4	17	ACERO	0,80
XRE004	1 1/4"	117,5	15,9	20,6	63,5	43,2	88,9	4	17	ACERO	1,10
XRE005	1 1/2"	127,0	17,5	22,2	73,0	49,5	98,4	4	17	ACERO	1,40
XRE006	2"	152,4	19,1	25,4	92,1	62,0	120,6	4	19	ACERO	2,20
XRE007	2 1/2"	177,8	22,2	28,6	104,8	74,7	139,7	4	19	ACERO	3,60
XRE008	3"	190,5	23,8	30,2	127,0	90,7	152,4	4	19	ACERO	4,10
—	3 1/2"	215,9	23,8	31,7	139,7	103,4	177,8	8	19	ACERO	5,20
XRE009	4"	228,6	23,8	33,3	157,2	116,1	190,5	8	19	ACERO	5,60
XRE040	5"	254,0	23,8	36,5	185,7	143,8	215,9	8	23	ACERO	6,30
XRE041	6"	279,4	25,4	39,7	215,9	170,7	241,3	8	23	ACERO	7,50

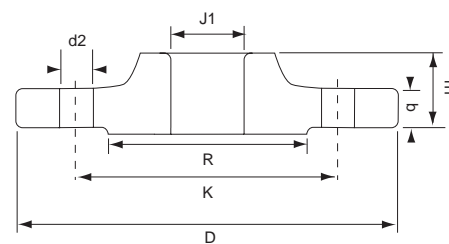
ASA 150 SLIP-ON INOX-316

XRE030	1/2"	88,9	11,1	15,9	34,9	22,3	60,3	4	16	INOX-316	0,40
XRE032	3/4"	98,4	12,7	15,9	42,9	27,7	69,8	4	16	INOX-316	0,70
XRE0321	1"	107,9	14,3	17,5	50,8	34,5	79,4	4	17	INOX-316	0,80
XRE033	1 1/4"	117,5	15,9	20,6	63,5	43,2	88,9	4	17	INOX-316	1,10
XRE034	1 1/2"	127,0	17,5	22,2	73,0	49,5	98,4	4	17	INOX-316	1,40
XRE035	2"	152,4	19,1	25,4	92,1	62,0	120,6	4	19	INOX-316	2,20
XRE036	2 1/2"	177,8	22,2	28,6	104,8	74,7	139,7	4	19	INOX-316	3,60
XRE037	3"	190,5	23,8	30,2	127,0	90,7	152,4	4	19	INOX-316	4,10
—	3 1/2"	215,9	23,8	31,7	139,7	103,4	177,8	8	19	INOX-316	5,20
XRE031	4"	228,6	23,8	33,3	157,2	116,1	190,5	8	19	INOX-316	5,60
XRE019	5"	254,0	23,8	36,5	185,7	143,8	215,9	8	23	INOX-316	6,30
XRE038	6"	279,4	25,4	39,7	215,9	170,7	241,3	8	23	INOX-316	7,50



ASA 300 SLIP-ON ACERO

—	1/2"	95,2	14,3	22,2	34,9	22,3	66,7	4	16	ACERO	0,70
—	3/4"	117,5	15,9	25,4	42,9	27,7	82,5	4	19	ACERO	1,10
—	1"	123,8	17,5	27,0	50,8	34,5	88,9	4	19	ACERO	1,40
—	1 1/4"	133,3	19,0	27,0	63,5	43,2	98,4	4	19	ACERO	1,80
—	1 1/2"	155,6	20,6	30,2	73,0	49,5	114,3	4	23	ACERO	2,60
—	2"	165,1	22,2	33,3	92,1	62,0	127,0	8	19	ACERO	3,40
—	2 1/2"	190,5	25,4	38,1	104,8	74,7	149,2	8	23	ACERO	4,40
—	3"	209,5	28,6	42,9	127,0	90,7	168,3	8	23	ACERO	6,10
—	3 1/2"	228,6	30,2	44,4	139,7	103,4	184,1	8	23	ACERO	7,50
—	4"	254,0	31,8	47,6	157,2	116,1	200,0	8	23	ACERO	10,1
—	5"	279,4	34,9	50,8	185,7	143,8	234,9	8	23	ACERO	12,5
—	6"	317,5	36,5	52,4	215,9	170,7	269,9	12	23	ACERO	14,1



ASA 300 SLIP-ON INOX-316

—	1/2"	95,2	14,3	22,2	34,9	22,3	66,7	4	16	INOX-316	0,70
—	3/4"	117,5	15,9	25,4	42,9	27,7	82,5	4	19	INOX-316	1,10
—	1"	123,8	17,5	27,0	50,8	34,5	88,9	4	19	INOX-316	1,40
—	1 1/4"	133,3	19,0	27,0	63,5	43,2	98,4	4	19	INOX-316	1,80
—	1 1/2"	155,6	20,6	30,2	73,0	49,5	114,3	4	23	INOX-316	2,60
—	2"	165,1	22,2	33,3	92,1	62,0	127,0	8	19	INOX-316	3,40
—	2 1/2"	190,5	25,4	38,1	104,8	74,7	149,2	8	23	INOX-316	4,40
—	3"	209,5	28,6	42,9	127,0	90,7	168,3	8	23	INOX-316	6,10
—	3 1/2"	228,6	30,2	44,4	139,7	103,4	184,1	8	23	INOX-316	7,50
—	4"	254,0	31,8	47,6	157,2	116,1	200,0	8	23	INOX-316	10,1
—	5"	279,4	34,9	50,8	185,7	143,8	234,9	8	23	INOX-316	12,5
—	6"	317,5	36,5	52,4	215,9	170,7	269,9	12	23	INOX-316	14,1

Other Couplings and more ...

Ref. Gassó	Medidas disponibles Sizes available	Material
LPG (API) WECO RACORES CCOUPLINGS		
—	DN 1 1/2" - 3"	ASTM-A-350LF-2
—	DN 1 1/2" - 3"	ASTM-A-105

LPG (API) ENAGAS RACORES CCOUPLINGS		
—	DN 1 1/2" - 3"	LATON «CLEVITE»

HORMIGON CONCRET ENLACES BOMBEO ALTA PRESION PUMP HP COUPLINGS		
—	4"x 4"	ACERO
—	4"x 4 1/2"	ACERO
—	5"x 5"	ACERO

A RÓTULA SPHERICAL COUP. EURO-RAPID, BAUER, HUMET.		
—	DN 1/2" - 6"	INOX-316
—	DN 1/2" - 6"	ACERO

VALVULAS VALVES BOLA, MARIPOSA BALL, BUTERFLY		
—	DN 1/2" - 4"	ACERO
—	DN 1/2" - 4"	LATON
—	DN 1/2" - 4"	INOX-316

ABRAZADERAS CLAMPS BISAGRA, SUPER, BAND-IT		
—	DN 5/16" - 10"	ACERO
—	DN 5/16" - 10"	INOX-316



Chemical resistance charts

Los datos siguientes están basados en tests fiables y probados. Sin embargo, queremos hacer notar que estas tablas se facilitan con carácter orientativo, ya que no contemplan condiciones tales como temperaturas elevadas, contaminación del fluido, concentración, etc. que deben tenerse en cuenta durante su uso. Para cualquier aplicación en condiciones extremas consulte las recomendaciones de nuestro departamento técnico.

Nota: todos los datos están calculados para 20°C (68°F), excepto los marcados con otras características.

Leyenda: **A** recomendado; **B** bastante bueno; **C** bueno; **U** inadecuado; — sin datos.

The following data is based on test and believed to be reliable; however, we emphasise that the tabulation should be used as a guide only, since it does not take into consideration all variables such as elevated temperatures, fluid contamination, concentration, etc. that may be encountered in actual use. All critical applications should be tested. Contact Gassó for recommendation an assistance.

Note: all data based on 20°C (68°F) unless otherwise noted.

Key: A recommended; B minor to moderate effect; C moderate to severe; U unsatisfactory; — no data.

Códigos ASTM ASTM codes	Marca comercial Trade Name
AL	Aluminium
BR	Bronze
CS	Carbon Steel
316	316 Stainless

Producto a transvasar Chemical or material conveyed	Composición Compound				Producto a transvasar Chemical or material conveyed	Composición Compound			
	AL	BR	CS	316		AL	BR	CS	316
ABETIC ACID	—	—	—	A	BEER	A	B	C	A
ACETALDEHIDE	B	U	C	A	BEET SUGAR LIQUORS	A	A	B	A
ACETATES	A	A	B	A	BENZALDEHYDE	A	A	A	A
ACETIC ACID, 50%	C	U	U	A	BENZENE	B	B	B	B
ACETIC CAID, GLACIAL	A	B	U	A	BENZOIC ACID	B	B	U	B
ACETIC ANHYDRIDE	B	C	U	B	BENZYL ALCOHOL	B	B	A	B
ACETONE	B	A	A	B	BORIC ACID	B	B	U	A
ACRYLIC EMULSIONS	B	B	C	A	BUNKER OIL	A	B	A	A
ALIPHATIC SOLVENTS	A	A	A	A	BUTADIENE	A	C	B	A
AÑKYD RESIN	B	B	C	A	BUTANE	A	A	B	A
ALKYL BENZENE	B	B	A	A	BUTERMILK	A	U	U	A
ALLYL ALCOHOL	B	B	B	B	BUTYL ACETATE	B	B	B	B
ALLYL CHLORIDE	U	B	B	B	BUTYL ALCOHOL	A	B	B	A
ALUMINIUM CHLORIDE	U	U	U	A	BUTYL CELLOSOLVE	A	A	A	A
ALUMINIUM SULPHATE	U	U	U	A	BUTYLENE	A	A	A	A
AMINES-MIXED	C	U	B	A	BUTYLENE GLYCOL	A	A	A	A
AMMONIA SOLUTIONS	B	U	A	A	BUTYLETHYL KETONE	A	A	A	A
AMMONIA LIQUID (ANHYDROUS)	B	U	A	A	BUTYRALDEHYDE	A	A	A	A
AMMONIUM CARBONATE	B	U	B	B	BUTYRIC ACID	A	A	A	A
AMMONIUM CHLORIDE	C	U	B	A	CALCIUM CHLORIDE	U	B	U	B
AMMONIUM HYDROXIDE 28%	C	U	B	B	CALCIUM HYDROXIDE	U	C	C	B
AMMONIUM HYDROXIDE 34%	C	U	B	B	CALCIUM HYPOCHLORITE	C	U	U	C
AMMONIUM NITRATE	B	U	U	A	CALCIUM NITRATE	U	B	B	A
AMMONIUM PHOSPHATE	B	U	U	A	CALCIUM SULFATE	B	B	B	A
AMMONIUM SULFATE	C	B	C	A	CAMPENE	B	B	B	B
AMYL ACETATE	B	B	C	A	CAPRIC ACID	B	B	B	A
AMYL ALCOHOL	A	B	B	A	CAPROIC ACID	A	C	U	A
ANILINE	C	C	C	A	CAPRYLIC ACID	A	C	U	A
ANIONIC DETERGENTS	A	A	A	A	CARBITOL	A	A	A	A
ANTIMONY TRICHLORIDE	U	U	U	U	CARBITOL ACETATE	A	A	A	A
ASPHALT	C	A	A	A	CARBOLIC ACID	A	A	U	A
BARIUM CARBONATE	B	B	B	B	CARBON DIOXIDE, DRY	A	A	A	A
BARIUM CHLORIDE	U	B	C	C	CARBON DIOXIDE, WET	A	A	A	A
BARIUM HYDROXIDE	U	B	B	A	CARBON DISULFIDE	A	A	B	A
BARIUM SULFATE	U	C	C	B	CARBON TETRACHLORIDE	C	C	C	A
BARIUM SULFIDE	U	C	C	B	CARBONIC ACID	A	U	A	A
BEEF TALLOW	U	U	B	A	CASTOR OIL	A	A	A	A

Producto a transvasar Chemical or material conveyed	Composición Compound				Producto a transvasar Chemical or material conveyed	Composición Compound			
	AL	BR	CS	316		AL	BR	CS	316
CELLOSOLVE	A	A	A	A	ETHYL PROPYL PALMITATE	A	A	A	A
CELLOSOLVE ACETATE	A	A	A	A	ETHYLENE	A	A	A	A
CEROTIC ACID	A	C	U	A	ETHYLENE CHLOROHYDRIN	U	B	B	B
CETANE (HEXADECANE)	A	A	A	A	ETHYLENE CYANOHYDRIN	B	B	U	B
CHLORINATED SOLVENTS, DRY	A	A	A	A	ETHYLENE DIAMINE	C	U	B	A
CHLORINE, DRY	U	U	B	B	ETHYLENE DICHLORIDE	U	B	U	A
CHLOROACETIC ACID	U	U	U	U	ETHYLENE GLYCOL	A	B	B	B
CHLOROBENZENE	B	B	B	B	ETHYLENE GLYCOL ACETATE	—	—	—	A
CHLOROFORM	U	B	B	A	FATTY ACIDS	A	U	U	A
CHLOROSULPHONIC ACID	B	B	B	B	FERRIC CHLORIDE	U	U	U	U
CHLOROTHENE	A	A	A	A	FERRIC SULFATE	U	U	U	U
CHROMIC ACID	U	U	U	C	FERROUS CHLORIDE	U	U	U	U
CITRIC ACID	C	U	U	A	FERROUS SULFATE	U	B	U	A
COCA-COLA	—	—	—	A	FERTILIZER SOLUTIONS	U	U	A	A
COCONUT OIL	B	B	C	A	FISH OIL	—	—	—	A
COD LIVER OIL	A	A	U	A	FLEXOL PASTICIZER	A	A	A	B
COOPER NITRATE 5-50%	U	U	U	A	FORMALDEHYDE	B	A	C	A
COOPER SULFATE	C	U	U	B	FORMIC ACID	B	C	U	A
CORN OIL B	B	B	C	B	FREON 11	B	B	B	A
COTTONSEED OIL	B	B	C	B	FREON 12	B	B	B	A
CREOSOTE	B	A	B	A	FRUIT JUICES	B	B	U	A
CREOSYLIC ACID	C	C	C	B	FUEL OIL	A	A	A	—
CRUDE OIL	A	B	A	A	FUEL OIL, #6	A	A	A	—
CRYOGENICS	A	U	U	A	FURFURAL	B	B	B	B
CUMENE	B	B	B	B	FURFURYL ALCOHOL	B	B	B	B
CUPRIC CHLORIDE	U	U	U	U	GALLIC ACID	B	C	U	B
COPROUS CHLORIDE	U	U	U	U	GASOLINE	A	A	A	A
CUTTING OIL	A	A	B	A	GLASS WATER	U	U	B	B
CYCLOHEXANE	A	A	A	A	GLAUBER'S SALT	A	B	B	A
CYCLOHEXANONE	B	B	U	B	GLUCONIC ACID	B	B	A	B
DDT	U	U	A	A	GLUCOSE	A	A	B	A
DECYL ALCOHOL	A	A	A	A	GLYCERINE-GLYCEROL	A	A	B	A
DENATURED ALCOHOL	A	A	A	A	GLYCOLS	B	B	B	A
DI-OCTYL ADIPATE	U	U	A	A	GLYOXAL	B	B	B	A
DACETONE ALCOHOL	A	B	B	A	GYPSUM	B	B	B	A
DIAMMONIUM PHOSPHATE	B	U	U	A	HEPTANE	A	A	A	A
DIBUTYL PHTALATE	B	B	B	A	HEXDECANE	A	A	A	A
DICHLORO PROPANE	B	B	A	A	HEXANE	A	A	A	A
DICHLOROETHYL ETHER	A	A	A	A	HEXYL ALCOHOL	A	A	A	A
DIETHANOL AMINE	A	U	A	A	HEXYLENE GLYCOL	A	A	A	A
DIETHYLENE GLYCOL	A	A	A	A	HYDRAULIC OIL	A	B	A	A
DIETHYLENE TRIAMINE	A	U	A	A	HYDRIODIC ACID	U	U	U	B
DIISOBUTYL KETONE	A	A	A	A	HYDROBROMIC ACID	U	U	U	U
DIISOPROPYL KETONE	A	A	A	A	HYDROCHLORIC ACID, HOT 37%	U	U	U	U
DIMETHYL FORMAMIDE	U	U	A	A	HYDROCHLORIC ACID, CONCENTRATED	U	U	U	U
DIMETHYLAMINE	A	U	A	A	HYDROCIANIC ACID	A	U	A	B
DIOCTYL PHTALATE	B	A	B	A	HYDROGEN PEROXIDE, 30%	U	U	U	A
DIOXANE	B	A	A	A	HYDROGEN PEROXIDE, 70%	U	U	U	A
DIPENTENE	A	A	A	A	HYDROGEN SULFIDE AQ.	A	U	U	A
DIPROPYLENE GLYCOL	A	A	A	B	HYDROGEN SULFIDE N. AQ.	A	U	U	A
DODECYL BENZENE	A	A	A	A	INKS PRINTERS	B	C	U	A
DOWTHERM A or B	A	A	B	A	IRON POTASSIUM SULFATE	A	B	U	B
ETHANE	A	A	A	A	ISO-BUTANE	A	A	A	A
ETHANOL AMINE	A	U	B	B	ISO-BUTANOL	A	B	B	A
ETHER DIMETHYL	B	B	A	A	ISO-BUTYLAMINE	A	U	B	A
ETHERS	B	B	B	A	ISO-DECANOL	A	A	A	A
TEHYL ACETATE-ORGANIC ESTER	A	C	B	B	ISO-HEXANOL	A	A	A	A
ETHYL ACRYLATE	A	A	A	A	ISO-OCTANE	A	A	A	A
ETHYL ALCOHOL	B	B	B	A	ISO-PENTANE	A	A	A	A
ETHYL AMINE	A	U	B	B	ISOBUTYL-ACETATE	A	B	A	A
ETHYL ANILINE	B	U	A	B	ISOPHORONE (KETONE)	A	A	A	A
ETHYL BENZENE	A	B	A	B	ISOPROPANOL	A	A	B	A
ETHYL CHLORIDE, DRY	B	B	B	A	ISOPROPYL ACETATE	A	C	B	B
ETHYL CHLORIDE, WET	U	C	U	C	ISOPROPYL ALCOHOL	B	B	B	B
ETHYL ETHER	B	B	A	A	ISOPROPYLAMINE	A	U	B	B
ETHYL HEXANOL	B	B	A	A	ISOPROPYL ETHER	A	A	A	A
ETHYL LACTATE	B	B	B	B	JP-4 (MIL-J-5624)	A	B	A	A
ETHYL MERCAPTAN	B	U	U	B	JP-5 (MIL-J-5624)	A	A	A	A
ETHYL PROPYL MYRISTATE	A	A	A	A	JP-6 (MIL-J-25656)	A	B	A	A

Chemical resistance charts

Producto a transvasar Chemical or material conveyed	Composición Compound				Producto a transvasar Chemical or material conveyed	Composición Compound			
	AL	BR	CS	316		AL	BR	CS	316
KEROSENE	A	A	B	A	OILS-WATER EMU.	A	A	B	A
KETONE	A	A	A	A	OLEIC ACID	U	U	U	A
LACQUERS	A	A	U	A	OLIVE OIL	A	B	B	A
LACTIC ACIDS	A	U	U	A	ORTHO-DICHLOROBENZENE	B	B	B	B
LARD, ANIMAL FATS	A	A	C	A	PALM OIL	A	B	C	B
LATEX SOL. 70%	—	—	—	A	PALMITIC ACID	B	B	C	B
LAURIC ACID	A	C	A	A	PARADYNE	A	A	A	A
LECITHIN	A	A	C	A	PARAFFIN	A	A	B	A
LIGROIN (PETROLEUM ETHER O BENZINE)	A	A	A	A	PARA-TERT-AMYL PHENOL	A	A	B	A
LINOLEIC ACID	A	B	B	A	PARA-TERTBUTYL PHENOL	U	U	A	A
LINOLENIC ACID	A	B	B	A	PARATEX	U	U	A	A
LINSEED OIL	A	B	B	A	PARATHION	—	—	—	A
LIQUID FEED	—	—	—	A	PEANUT OIL	A	B	C	B
LIQUID PETROLEUM GAS (LPG)	A	A	A	A	PEAR OIL	A	B	C	B
LUBRICATING OILS, PETROLEUM BASE	A	B	A	A	PENTANE	A	B	B	B
MAGNESIUM CHLORIDE	U	U	B	A	PERCHLOROETHYLENE	U	C	A	A
MAGNESIUM HYDROXIDE	U	B	B	A	PERILLA OIL	A	B	B	A
MAGNESIUM NITRATE	B	C	B	A	PETROLEUM ETHER	A	A	A	A
MAGNESIUM SULPHATE	B	U	B	A	PETROLEUM OIL, CRUDE	A	B	A	A
MAIZE OIL	—	—	—	A	PETROLEUM SPIRITS	A	A	A	A
MALEIC ACID	B	B	B	A	PHENOL	A	A	B	A
MALONIC ACID	—	—	—	A	PHENOLIC RESINS	A	C	C	A
MENHADEN OIL	—	—	—	A	PHOSPHORIC ACID 10%	U	U	U	B
MERCURIC CHLORIDE	U	U	U	U	PHOSPHORIC ACID 25%	U	U	U	B
MESITYL OXIDE (KETONE)	B	B	A	B	PHOSPHORIC ACID 75%	U	U	U	B
METHANE	A	A	A	A	PHTHALIC ACID	B	B	U	B
METHYL ACETATE	A	C	B	B	PHTHALIC ABHYDRIDE	B	B	U	B
METHYL ACRYLATE	A	B	A	A	PICRIC ACID	C	U	—	A
METHYL ALCOHOL	U	B	B	A	POLYESTER RESIN	U	U	A	A
METHYL AMINE	B	U	B	B	POLIETHYLENE GLYCOL	A	B	B	B
METHYL AMYL ACETATE	A	C	B	B	POLYMERIZED GASOLINE	A	A	A	A
METHYL AMYL ALCOHOL	A	B	B	A	POLYPROPYLENE GLYCOL	A	B	B	B
METHYL ANILINE	B	U	A	B	POLYVINYL ACETATE	A	A	B	A
METHYL CELLOSOLVE	A	A	B	A	POLYVINYL ACETATE EMULSION	A	A	B	A
METHYL CYCLOHEXANE	A	A	A	A	POLYVINYL ALCOHOL	A	B	A	A
METHYLCYCLOHEXANOL	A	B	B	A	POTASH	C	—	A	A
METHYL ETHYL KETONE (MEK)	A	A	A	A	POTASSIUM ALUMINIUM SULFATE	B	B	C	A
METHYL GLYCOL ACETATE	A	C	A	A	POTASSIUM CHLORIDE	U	B	C	A
METHYL METHACRYLATE	A	A	A	A	POTASSIUM CYANIDE	U	U	B	A
METHYL PYRROLIDONE	U	U	A	A	POTASSIUM HYDROXIDE	U	U	U	A
METHYL SALICYLATE	—	—	—	A	POTASSIUM SULPHATE	B	B	B	B
METHYLENE CHLORIDE	U	B	B	B	POTASSIUM SULPHIDE	B	U	U	B
METHYLENE DICHLORIDE	C	B	B	B	PROPANE	A	A	A	A
METHYLENE GLYCOL	B	B	B	A	PROPIONIC ACID 20%	B	B	U	B
MILK	—	—	—	A	PRPYLENE	A	A	A	A
MINERAL OILS	A	B	B	A	PROPYLENE DIAMINE	B	B	B	A
MINERAL SPIRITS	A	B	B	B	PROPYLENE GLYCOL	A	B	B	B
MOLASSES (CRUDE)	A	A	A	A	PROPYLENE OXIDE	B	B	B	A
MOLASSES (EDIBLE)	A	A	A	A	PRUSSIC ACID	A	U	A	B
MONO CHLOROBENZENE	B	B	B	B	PYRIDINE	A	B	B	A
MONO ETHANOLAMINE	U	U	A	A	PYROGALLIC ACID	B	B	U	B
MURIATIC ACID	U	U	U	U	PYRROLIDINE	B	B	B	A
MYRISTIC ACID	A	A	A	A	RAFINATE	A	A	A	A
NAPHTA (ALIPHATIC)	A	B	A	B	RAYON (SPUN VISCOSE)	B	B	B	A
NAPHTA (AROMATIC)	A	B	A	B	RESINS & ROSINS	B	B	C	B
NAPHTA (V. M. & P)	A	B	A	B	RECINOLEIC ACID	B	A	A	A
NEASTFOOT OIL	—	—	—	A	ROTOGRAVE-INK	U	U	A	A
NICKEL AMONIUM SULFATE	U	U	U	—	RUBBER SOLVENT	A	A	A	A
NICKEL CHLORIDE	U	U	U	B	SALICYLIC ACID	C	C	U	A
NICKEL SULFATE	U	B	U	A	SALT WATER	B	B	U	A
NITRIC ACID 30%	U	U	U	A	SHELLACOL	A	A	A	A
NITRIC ACID 50%	U	U	U	A	SOAP SOLUTIONS	C	A	A	A
NITRIC ACID 70%	U	U	U	A	SODIUM ALUMINATE	C	B	C	A
NITRIC ACID100%	A	U	U	A	SODIUM BICARBONATE (BAKING SODA)	U	B	B	A
NITROFLUOROBENZENE	C	U	B	B	SODIUM ARBONATE (SODA ASH)	U	U	B	A
NITROBENZENE	B	B	A	B	SODIUM CHLORIDE	U	B	B	A
NITROCUMENE	C	U	B	B	SODIUM CHROMATE	B	B	B	B
NITROETHANE	A	A	A	A	SODIUM CYANIDE	U	U	U	A
NITROPROPANE	A	A	A	A	SODIUM HYDROXIDE	U	A	A	A
N-OCTANE	A	A	A	A	SODIUM HYPOCHLORITE	U	U	U	U

Producto a transvasar Chemical or material conveyed	Composición Compound			
	AL	BR	CS	316
SODIUM METAPHOSPHATE	U	B	U	B
SODIUM METASILICATE	U	U	B	A
SODIUM MONOCHLORO CETIC ACID	U	U	U	A
SODIUM NITRATE	A	B	B	A
SODIUM PERBORATE	U	B	B	B
SODIUM PEROXIDE	C	U	B	A
SODIUM PHOSPHATE	U	B	B	B
SODIUM SILICATE	U	U	B	B
SODIUM SULPHATE	A	B	B	A
SODIUM SULPHIDE	U	U	C	B
SODIUM THIOSULFATE	A	B	U	B
SODIUM XYLENE SULFONATE	A	B	A	A
SOLVESSO-100-150 AROMATIC SOLVENTS	A	A	A	A
SOUPS	—	—	—	A
SOYBEAN OIL	B	B	U	A
SPERM OIL	—	—	—	A
STANNIC CHLORIDE	U	U	U	U
STANNOUS CHLORIDE	U	U	U	U
STARCH	B	B	A	A
STEAM CONDENSATE	A	A	A	A
STEARIC ACID	B	C	C	A
STODDARD SOLVENT	A	A	A	A
STYRENE	A	B	A	A
SUCROSE SOLUTIONS	A	A	B	A
SULFATE LIQUORS	U	U	B	A
SULFONIC ACID	U	B	U	B
SULFUR	A	U	A	A
SULFUR DIOXIDE	B	B	B	B
SULFURIC ACID	U	U	U	B
SULFURIC ACID 30%	U	U	U	U
SULFURIC ACID 50%	U	U	U	U
SULFURIC ACID 85%	U	U	B	A
SULFURIC ACID 93%	U	U	B	A
SULFURIZED OIL	B	U	B	B
TALL OIL	U	B	B	B
TANNIC ACID	C	B	C	A
TAR OIL	B	A	B	A
TERGITOL NONIONIC NPX	—	—	U	A
TETRA METHYL BENZENE	A	A	A	A
TETRAHYDROFURAN	A	A	A	A
TETRAPROPYLENE	A	A	A	A
TEXTILE SPIRITS	A	A	A	A
TITANIUM SULFATE 10%	U	B	U	B
TOMATO PASTE	B	C	C	A
TRICHLOROACETIC ACID	U	U	U	U
TRICHLOROETHANE	U	A	A	A
TRICHLOROETHYLENE	U	B	B	B
TRICLENE D	U	B	B	B
TRI-DECYL ALCOHOL	A	A	A	A
TRIETHANOL AMINE	A	U	A	A
TRIETHYLENE GLYCOL	A	A	A	A
TRIETHYLENE TETRAAMINE	U	U	A	A
TRIMETHYLAMINE	A	U	A	A
TRISODIUM PHOSPHATE	U	U	A	A
TURPENTINE	A	B	B	A
URAN-POLY-N	U	U	A	A
UREA	B	U	C	B
UREA FORMADEHYDE	U	U	A	A
VARNISH	A	A	C	A
VEGETABLE OIL	A	B	B	A
VINEGAR	C	B	U	A
VINYL ACETATE	U	U	A	A
VINYL CHLORIDE	U	U	A	A
WATER	A	A	C	A
WATER (DISTILLED)	A	A	U	A
WHISKEY AND WINES	U	A	U	A
XYLENE	A	A	A	A
ZEOLITES	U	U	A	A
ZINC CHLORIDE	U	U	U	U
ZINC SULFATE	U	C	B	A



COMERCIAL GASSÓ

e-mail: gasso@gasso.com www.gasso.com

Barcelona
(Sant Boi)

Tel. 93. 652 98 00
Fax 93. 652 98 04
gasso@gasso.com

Vizcaya

Tel. 94. 471 03 35
Fax 94. 471 03 57
gassobilbo@gasso.com

Madrid

Tel. 91. 642 22 21
Fax 91. 642 16 85
gassomadrid@gasso.com

Tarragona

Tel. 977. 54 57 55
Fax 977. 54 75 22
gassotarraco@gasso.com

Lisboa

Tel. +35 213660049
Fax +35 213624213
gassopt@gasso.com